

Green endoscopy, one step toward a sustainable future: Literature review



Authors

Marcello Maida^{1,2}, Alessandro Vitello³, Endrit Shahini⁴, Roberto Vassallo⁵, Emanuele Sinagra⁶, Socrate Pallio⁷, Giuseppinella Melita⁷, Daryl Ramai⁸, Marco Spadaccini^{9,10}, Cesare Hassan^{9,10}, Antonio Facciorusso¹¹

Institutions

- 1 Department of Medicine and Surgery, University of Enna 'Kore', Enna, Italy
- 2 Gastroenterology Unit, Umberto I Hospital, Enna, Italy
- 3 Gastroenterology and Endoscopy Unit, S. Elia Hospital, ASP di Caltanissetta, Caltanissetta, Italy
- 4 Gastroenterology Unit, National Institute of Gastroenterology-IRCCS "Saverio de Bellis", Castellana Grotte, Bari, Italy
- 5 Gastroenterology Unit, Buccheri La Ferla Fatebenefratelli Hospital, Palermo, Italy
- 6 Gastroenterology and Endoscopy Unit, Fondazione Istituto San Raffaele G Giglio di Cefalù, Cefalù, Italy
- 7 Digestive Diseases Endoscopy Unit, Policlinico G. Martino Hospital, University of Messina, Messina, Italy
- 8 Gastroenterology and Hepatology, The University of Utah School of Medicine, Salt Lake City, United States
- 9 Endoscopy Unit, IRCCS Humanitas Research Hospital, Rozzano, Italy
- 10 Department of Biomedical Sciences, Humanitas University, Milan, Italy
- 11 Gastroenterology Unit, Department of Medical Sciences, University of Foggia, Foggia, Italy

Key words

Quality and logistical aspects, Performance and complications, Quality management, Image and data processing, documentatiton

received 15.9.2023

accepted after revision 30.1.2024

accepted manuscript online 15.7.2024

Bibliography

Endosc Int Open 2024; 12: E968–E980

DOI 10.1055/a-2303-8621

ISSN 2364-3722

© 2024. The Author(s).

This is an open access article published by Thieme under the terms of the Creative Commons Attribution-NonDerivative-NonCommercial License, permitting copying and reproduction so long as the original work is given appropriate credit. Contents may not be used for commercial purposes, or adapted, remixed, transformed or built upon. (<https://creativecommons.org/licenses/by-nc-nd/4.0/>)

Georg Thieme Verlag KG, Rüdigerstraße 14,
70469 Stuttgart, Germany

Corresponding author

Prof. Marcello Maida, MD, University of Enna 'Kore',
Department of Medicine and Surgery, Enna, Italy
marcello.maida@unikore.it

ABSTRACT

Rapid climate change or climate crisis is one of the most serious emergencies of the 21st century, accounting for highly impactful and irreversible changes worldwide. Climate crisis can also affect the epidemiology and disease burden of gastrointestinal diseases because they have a connection with environmental factors and nutrition.

Gastrointestinal endoscopy is a highly intensive procedure with a significant contribution to greenhouse gas (GHG) emissions. Moreover, endoscopy is the third highest generator of waste in healthcare facilities with significant contributions to carbon footprint. The main sources of direct carbon emission in endoscopy are use of high-powered consumption devices (e.g. computers, anesthesia machines, wash machines for reprocessing, scope processors, and lighting) and waste production derived mainly from use of disposable devices. Indirect sources of emissions are those derived from heating and cooling of facilities, processing of histological samples, and transportation of patients and materials.

Consequently, sustainable endoscopy and climate change have been the focus of discussions between endoscopy providers and professional societies with the aim of taking action to reduce environmental impact. The term "green endoscopy" refers to the practice of gastroenterology that aims to raise awareness, assess, and reduce endoscopy's environmental impact.

Nevertheless, while awareness has been growing, guidance about practical interventions to reduce the carbon footprint of gastrointestinal endoscopy are lacking. This review aims to summarize current data regarding the impact of endoscopy on GHG emissions and possible strategies to mitigate this phenomenon. Further, we aim to promote the evolution of a more sustainable "green endoscopy".

Introduction

Rapid climate change is a serious emergency of the 21st century. This climate crisis has created highly dangerous and irreversible changes with serious consequences around the world, from human health to economic and geopolitical effects.

According to the Global Climate Report of the National Centers for Environmental Information, the global surface temperature in September 2022 tied for the fifth highest position since the record began in 1880 [1].

Because of their impact on energy retention in the atmosphere, greenhouse gases (GHG) represent a critical link between human activities and rising temperatures. For instance, deforestation and the use of fossil fuels contribute significantly to GHG production and accumulation, leading to global warming and extreme weather events.

The term “carbon footprint” is defined by the Carbon Trust as “the total set of GHG caused directly and indirectly by an individual, event, organization or product.” GHG refers to any gas which accumulates in the atmosphere and absorbs and re-emits heat, thereby carrying the potential for global warming. Carbon dioxide (CO₂) accounts for 85% of all GHG, while other “CO₂ equivalent gases” include methane (CH₄), nitrous oxide (N₂O), hydrofluorocarbons (HFCs), perfluorocarbons (PFCs), sulfur hexafluoride (SF₆), and nitrogen trifluoride (NF₃).

Consequently, in the United Kingdom (UK) the National Health Service (NHS) has committed to a net-zero carbon footprint for directly controlled emissions by 2040 and net zero for those within its supply chain (indirectly) by 2045 [2]. Current global targets to face the climate crisis include reaching net-zero carbon emissions by 2050 and keeping rising global temperature below 1.5° C [3].

Rising temperatures can have a direct impact on health, causing a significant increase in disease, morbidity, and mortality, and potentially leading hospitals and health services to collapse.

Climate crisis may also affect the epidemiology and burden of gastrointestinal diseases because they have a close connection with environmental factors and nutrition. For instance, environmental changes may affect the quality and contamination of land and agricultural products, thereby increasing the spread of infectious diseases in both developing and industrialized countries. The corollary of consuming poor-quality food has far-reaching consequences, which includes altering the epidemiology of gastrointestinal cancers, increasing the level of stress of the general population, and possibly increasing the prevalence of gut-brain interaction disorders (DGBI) [4, 5, 6, 7].

In a call to action to raise awareness about environmental issues and the need to keep the Earth's temperature stable, 197 countries signed the famous Glasgow Climate Pact in 2021 COP 26. More recently, in November 2022 at Sharm el Scheik WHO Health pavilion, at the United Nations Climate Change Conference COP 27, countries promised to reduce CO₂ emissions and decarbonization [8].

The aim of this narrative review is to summarize current data regarding the impact of endoscopy on GHG emissions and possible strategies to mitigate this phenomenon.

The primary sources MEDLINE, Scopus, and the Cochrane Library were searched for studies assessing GHG emission in endoscopy facilities, through December 2023.

Environmental impact of gastrointestinal endoscopy

► **Table 1** summarizes the results of current studies estimating carbon footprint in gastrointestinal endoscopy. One procedure generates 1.5 to 2 kg of plastic waste but only 0.3 kg is recyclable. A recent estimate showed that the energy consumption over an average of 40 procedures per day was 31,416 kWh per year, accounting for carbon emissions of 22.1 tCO₂ per year (► **Fig. 1**) [9, 10].

In the UK the healthcare system is responsible for 6.3% of UK total carbon emissions and 5% of total air pollution [14, 20]. Of note, this estimate excludes the energy consumption necessary for heating and cooling which adds to the overall carbon footprint.

Concerning waste production, endoscopy is the third highest generator of waste in healthcare facilities, contributing to GHG emissions worldwide.

Each endoscopy bed-day is thought to generate approximately 3 kg of waste and the specialty is responsible for 13,500 tons of plastic waste in the United States each year, making it the hospital's third highest waste generator [16]. Most supplies used during endoscopic examinations are often disposable and made of plastic, resulting in approximately 2 kg of waste per procedure [10].

A recent study estimated the environmental impact of a digestive endoscopy unit by measuring the mass and volume of waste in suites, pre-procedure, and post-procedure areas [15]. The total waste generated during a 5-day routine in a high-volume endoscopic center was 546 kg, which included direct landfill, biohazard, and recycled waste. During the same period, 73 kg of total waste was generated in a low-volume center. Using the number of endoscopic procedures performed in the United States each year (18 million), the authors calculated a disposable waste production of 836,000 cubic meters per year, which is equivalent to covering approximately 117 soccer fields to a height of 1 meter with waste. Another analysis estimated CO₂ emissions of more than 3 million gallons of gasoline consumed or more than 39 million pounds of coal burned [10].

Sequestering the CO₂ produced by endoscopy procedures would take 112,009 acres of forests for 1 year [9, 10]. Thus, to decarbonize health care, endoscopy represents a high-yield mitigation opportunity [15].

Although this is a fairly recent topic and many studies are emerging, there is still not enough data to quantify the problem globally.

A 2022 systematic review summarized the available literature and found only nine full-length articles. This indicates an urgent need for collecting systematic data on gastrointestinal endoscopy emissions worldwide [21].

► **Table 1** Current studies estimating the carbon footprint in endoscopy.

Author	Year	Study	Country	Endoscopic procedures	Carbon footprint estimate	Other considerations
Gayam S [10]	2020	Retro-spective	United States	18 million endoscopic procedures annually	Endoscopy generates 13,500 tons of plastic waste, 10,800 tons of which are nonrecyclable. The GHG emissions produced are equivalent to nearly 88,108,062 miles driven by an average vehicle. These procedures emit enough CO ₂ to equal more than 3,995,448 gallons of gasoline consumed.	It would take 46,371 acres of forest over a year to sequester the CO ₂ produced by these procedures.
Siau K [9]	2021	Review	United States	18 million endoscopic procedures annually	Annual CO ₂ emissions of 85,768 metric tons are equivalent to more than 9 million gallons of gasoline consumed, 94 million pounds of coal burned, and 212 million miles driven in an average non-electric car.	To offset these CO ₂ emissions, an additional 112,000 acres of new forest would be needed each year.
La-croute J [11]	2021	Retro-spective	France	Medium-sized Endoscopy Unit (8524 procedures/6070 patients)	A French ambulatory endoscopy unit estimated GHG emissions of 28 kg CO ₂ e per endoscopic procedure, with travel (patients and staff) accounting for 45% of the unit's footprint (74% of patients travelled by car). Medical and non-medical equipment (32%), energy consumption (12%), consumables (7%), waste (3%), freight (0.4%), and medical gases (0.005%) were the other sources of emissions.	The production of equipment such as wash disinfectors and endoscopes was responsible for one-third of the emissions.
La-croute J [11]	2021	Retro-spective	France	524 endoscopic procedures/6070 patients	GHG emissions at the center were estimated to be 241.4 tons CO ₂ e, resulting in a carbon footprint of 28.4 kg CO ₂ e for one gastrointestinal endoscopy procedure. The main source of GHG emissions, accounting for 45% of total emissions, was travel to and from the center by patients and center staff. Other sources of emissions included medical and non-medical equipment (32%), energy consumption (12%), consumables (7%), waste (3%), freight (0.4%), and medical gases (0.005%), in that order.	NA

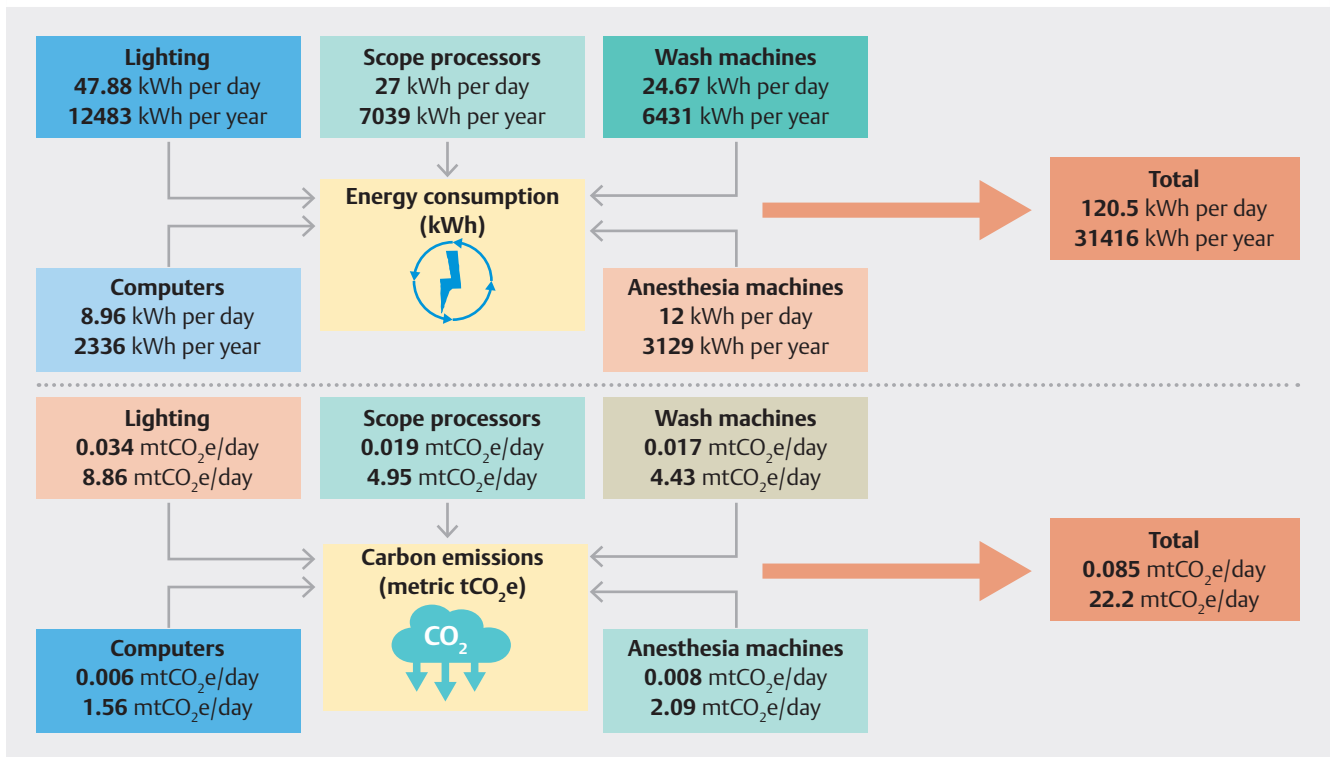
► **Table 1** (Continuation)

Author	Year	Study	Country	Endoscopic procedures	Carbon footprint estimate	Other considerations
Henniger D [12]	2022	Retro-spective	Germany	Medium-sized endoscopy unit (8000 procedures per year)	The total amount of carbon dioxide equivalents emitted was 62.72 tons. Emissions from self-controlled sources: 35.91 tons were associated with the consumption of natural gas for heating; 26.81 tons total indirect emissions (manufacturing, processing, packaging, and transportation of purchased accessories).	This assessment excluded emissions from patient and staff travel as well as the manufacture of capital equipment such as endoscopes.
Le NNT [13]	2022	Prospective	United States	NA	The manufacture, transportation, use, and reprocessing of a reusable duodenoscope produces 1.53 kg CO ₂ e.15 A single-use duodenoscope would generate up to 47-fold more GHG emissions in this model, with more than 90% of these emissions generated during the manufacturing process of the single-use endoscope.	The study used approximations to estimate emissions associated with endoscope production, and the assessment also accounted for the electricity and detergents required during high-level disinfection.
Donnelly L [14]	2022	Review	UK	2.1 million procedures were performed in 2019	The NHS discards approximately 133,000 tons of plastic each year, with only about 5% of this waste currently being recovered. NHS operations are responsible for 6.3% of total UK carbon emissions and 5% of total air pollution.	0.29 kg CO ₂ e for each biopsy pot or 0.79 kg CO ₂ e for three biopsy pots, corresponding to 0.7 to 2.0 miles driven.
Namburur S [15]	2022	Cross-sectional study	United States	278 endoscopies/243 patient endoscopies at two US academic medical centers with low and high endoscopy volume (2000 and 13,000 procedures annually)	Each endoscopy generated 2.1 kg of disposable waste (46 L volume). 64% of waste was going to the landfill, 28% represented biohazard waste and 9% was recycled. The estimated total waste generated during all endoscopic procedures performed in the USA annually would weigh 38,000 metric tons (equivalent of 25,000 passenger cars) and cover 117 soccer fields to 1 m depth.	If all endoscopic procedures were performed with single-use endoscopes and accounting for reprocessing, the net waste mass would increase by 40%.

► Table 1 (Continuation)

Author	Year	Study	Country	Endoscopic procedures	Carbon footprint estimate	Other considerations
Baddeley R [16]	2022	Commentary	United States	18 million endoscopic procedures annually	86,000 tons of CO ₂ equivalent of greenhouse gas emissions, the equivalent of 213 million miles driven in a passenger car	Administration of an endoscopy service: Each endoscopy bed-day is estimated to generate 3 kg of waste, with the specialty responsible for 13,500 tons of plastic waste per year; Procedure considerations: Processing three gastrointestinal biopsy pots is equivalent to driving two miles. Re-processing reusable endoscopes is a resource-intensive process that requires large amounts of water (30 gallons per cycle), disinfectants, detergents, and electricity (24.67 kWh per day). With an assumed infection rate of 0.02%, using single-use endoscopes would result in 20 times the CO ₂ emissions of reusable duodenoscopes; Single-use consumables: Thermal technologies that compress used polypropylene products like personal protective equipment and other single-use plastics into rectangular blocks that can be sold and converted into pellets for new plastic products reduce the amount of waste that must be transported offsite. Trackable inventory systems can assist in reducing waste from expired supplies.
López-Muñoz P [17]	2022	Process-based analysis	France	NA	When the emissions from the production of a reusable endoscope were averaged over its lifetime, they were very low. Energy accounted for only 12% of the French center's emissions (this reflects, in part, France's high nuclear fraction in their energy mix as well as the relative efficiency of a dedicated ambulatory unit).	NA
Elli L [18]	2023	Review	Italy	Endoscopic procedures performed per 1,000 inhabitants	The carbon cost of inappropriate EGD and colonoscopy was 4,133 CO ₂ metric tons per year, ranging from 3,527 to 4,749 liters of gasoline consumed. Using the same data, the estimated carbon footprint of inappropriate digestive endoscopy in Europe was 30,804 metric tons.	NA
López-Muñoz P [19]	2023	Thermochemical analysis	Spain	NA	The study team was able to conduct a process-based LCA using this material composition data, reporting GHG emissions of 0.31–0.57 kg CO ₂ e per accessory.	NA

EGD, esophagogastroduodenoscopy; GHG, greenhouse gas; LCA, life-cycle assessment; NA, not applicable; NHS, National Health Service.



► Fig. 1 Estimated energy consumption and carbon emissions in endoscopy units.

Sources of carbon emission in endoscopy

GHG emissions can have different sources within endoscopy.

A retrospective study conducted in 2021 in an ambulatory gastroenterology center in France performing 8524 procedures on 6070 patients showed that the main GHG emission was from travel by patients and staff to and from the center (45%), followed by medical and non-medical equipment (32%), energy consumption (12%), consumables (7%), waste (3%), freight (0.4%), and medical gases (0.005%) [11].

To approach emissions in an organized manner, the carbon dioxide-producing processes can be divided into three scopes based on the GHG Protocol [22].

Scope 1 includes “direct emissions” from sources that are owned or controlled by the healthcare facility. Scope 2 includes all the emissions released into the atmosphere from the energy used in the healthcare facility but produced by a different organization. Scope 3 includes all other indirect emissions that occur across the value chain and are outside of the healthcare facility’s direct control.

Scope 1 emissions

They include “direct emissions,” for instance, burning of fuel or natural gas used for heating or release of anesthetic gases within a hospital. In this regard, a recent study analyzing yearly emissions of a middle-sized gastrointestinal endoscopy unit in Germany (8000 procedures per year) showed a total yearly production of 62.72 tons of carbon dioxide equivalents, of these, more than half (35.91 tons) from scope 1 and related to the consumption of natural gas used for heating [12].

Scope 2 emissions

Decontamination and reprocessing of endoscopic equipment

Equipment reprocessing is a critical step for reusable endoscopes where effective cleaning and sterilization is required to prevent transmissible infection. The process is complex and resource consuming, involves multiple cycles requiring large volumes of tap or filtered or deionized water (80–100 L per wash), electricity, heat, disinfectants, and detergents. Reprocessing may be broken down to include: precleaning, cleaning, disinfection, rinsing, drying, and cleaning of reusable components. Each endoscopy washing machine incurs approximately 24.67 kWh/d equating to 0.017 tCO₂e/d [10, 15, 23, 24, 25, 26, 27].

The adoption of double-basin washing machines uses less energy when cleaning two scopes (simultaneously) compared with single-basin washing machines (600W for two scopes cleaned vs 400W for one scope cleaned, respectively) [9].

The consequences from improperly performed reprocessing of endoscopes can place patients at risk for acquiring infections. In addition, exposure to biohazardous and toxic conditions in the reprocessing room can be harmful. The centralization process is driven with the primary goals of increasing reprocessing oversight and efficiency, increasing productivity through deployment of a dedicated reprocessing team, promoting standardization of products utilized in reprocessing, reduction in requirements for capital reprocessing equipment, and reducing reprocessing variability [27].

High power consumption devices

Endoscopy facilities are characterized by their high energy consumption. The main sources of energy consumption within endoscopy units are, in descending order: 1) computers, 2) anesthesia machines, 3) washing machines, 4) scope processors, and 5) lighting [9].

Computers consume a large amount of energy. However, they enable data digitization and avoid secondary emissions resulting from paper utilization. However, their consumption must be limited, especially when not in use.

The reprocessing of reusable endoscopes is a resource-intensive process that requires large amounts of water (30 gallons per cycle), disinfectants, detergents, as well as electricity (24.67 kWh per day) [10].

Similarly, lights can be optimized by replacing halogen lights with LEDs and optimizing their use (for example, using soft lights during endoscopic tasks and ensuring they are switched off when not in use).

In addition to reducing energy consumption, it is essential to guarantee a green energy supply from renewable sources.

Of note, the above-mentioned analysis of a middle-sized gastrointestinal endoscopy unit in Germany showed 0% scope 2 emissions. In fact, despite the yearly electrical energy attributable to the unit being 46622 kWh, 100% of electrical energy used came from regenerative sources (solar, water or wind energy) [12].

Scope 3 emissions

These include all other indirect emissions that occur across the value chain and are outside of the healthcare facility direct control. Among these:

Single-use devices

The use of disposable materials in endoscopy mainly refers to two areas: single-use ancillary devices and single-use endoscopes. Endoscopy requires a significant number of single-use ancillary devices. Most of them are disposable and made of plastic, accounting for approximately 1.5 to 2 kg of waste per procedure [10, 15, 26]. Moreover, digestive endoscopy and its accessories produce varying amounts of highly polluting elements (e.g. nickel, titanium and synthetic polymers) [23, 24].

A recent study analyzed material composition of disposable forceps, snares, and clips showed that composition from different manufacturers varied widely, from common materials (polyethylene, polypropylene and acrylonitrile) to low global warming potential waste materials (stainless steel). Significant differences were found for the forceps (0.31–0.47 kg of CO₂ equivalent [CO₂-eq]) and hemostatic clips (0.41–0.57 kg CO₂-eq) between the manufacturers [19].

As a result, use of disposable ancillary devices must be optimized to reduce GHG emissions. Moreover, proper knowledge of carbon footprint is crucial to selecting the most sustainable product since large variations between brands are present.

Single-use endoscopes

Concerning single-use endoscopes, recent research has been focused on duodenoscopy-associated infections. In fact, use of these endoscopes poses a significant reprocessing challenge for a variety of reasons and a recent meta-analysis of over 13,100 samples revealed a 15% contamination rate of reprocessed patient-ready duodenoscopes [25, 26]. However, the clinical impact of contaminated endoscopes is debatable.

Single-use endoscopes have been developed as a solution to decreasing endoscopy-related infections. In addition, the concept of single-use endoscopes has expanded from duodenoscopes to gastroscopes and colonoscopes. Nevertheless, the sustainability of these endoscopes is still debated because recyclable metal represents only a smaller part of the endoscope and, therefore, the main part of the device is disposed of in the same way as other waste [28].

Concerning reprocessing-related emissions, recent data showed that using single-use endoscopes, with an assumed infection rate of 0.02%, would produce 20 to 47 times the CO₂ emissions of reusable duodenoscopes without accounting for packaging or transporting of disposed duodenoscopes [13]. Moreover, a recently published paper has quantified the implications of a single-use endoscope and showed that it would result in 40% increase in total waste after accounting for the lack of waste from reprocessing [15].

If all endoscopic retrograde cholangiopancreatographies (ERCPs) and colonoscopies were performed with disposable rather than reusable devices, the net waste mass generated per endoscopic procedure would increase by 25%, even if waste mass generated from reprocessing would decrease [15].

A recent randomized controlled trial (RCT) showed that in patients with bacterial infections (with positive rectal swab), the rate of post-ERCP infections was 0% after testing for the pathogens isolated from the rectal swab prior to the procedure [29].

In the United States, approximately 500,000 ERCPs are performed annually [30]. The rate of serious infections is about 0.007% (36 cases per 500,000 procedures) likely due to ineffective cleaning based on 2018 data. Use of disposable endcaps would reduce this number by half, to a theoretical rate of 0.0046% (23 cases per 500,000 procedures). With a contamination rate of 1/1600 ERCPs and a transmission range from 1/1,800,000 to 1/276,000 ERCPs, risk of a patient becoming infected by a contaminated endoscope seems to be exceptionally low, at too high a cost for current and future generations (ICER 500,000 USD) [13].

Despite their theoretical advantage, the role of single-use endoscopes in terms of clinically relevant infections is debatable. Clarification is needed to determine which instruments should be considered for single-use only (duodenoscopes only or also gastroscopes and colonoscopes). Furthermore, the type of patients should also be clarified (e.g. intensive care unit, frail, or immune compromised).

Moreover, there is a lack of RCTs comparing single-use devices with reusable ones in terms of infection risk due to sample size constraints. Many studies evaluate only colonization, even

though colonization does not necessarily equate to clinically relevant infection.

A recent international group of experts identified a series of best practice recommendations for single-use endoscopes and accessories using a modified Delphi process. They concluded that further research is needed for expanding possible indications of single-use scopes. In addition, it was recommended that single-use endoscopes should be distributed with an effective recycling mechanism in place, considering patient characteristics and setting (frail, immunocompromised, treatment in an intensive care unit setting, ongoing sepsis or infection from multidrug-resistant organisms).

Overall, the safety, environmental impact, sustainability and acceptability of single-use endoscopes should be explored prior to their adoption [27].

Personal protective equipment

Personal protective equipment (PPE) (e.g. facemasks, gowns, aprons, gloves) is often used during endoscopy. The need for PPE grew during the COVID-19 pandemic and increased production of waste (about 8,060,000 kg per year in Italy), with significant environmental consequences [31, 32, 33, 34].

Histological examinations

Endoscopy often requires additional diagnostic examinations such as histology.

Processing of biopsy samples taken during endoscopy is responsible for high GHG emissions. Above all, this concerns all the steps necessary for processing biological samples including production and travel of chemical reagents, production of waste, and electricity consumption.

Applied to more than 20 million biopsies performed in the US annually, emissions from biopsy processing are equivalent to yearly GHG emissions from 1,200 passenger cars [35].

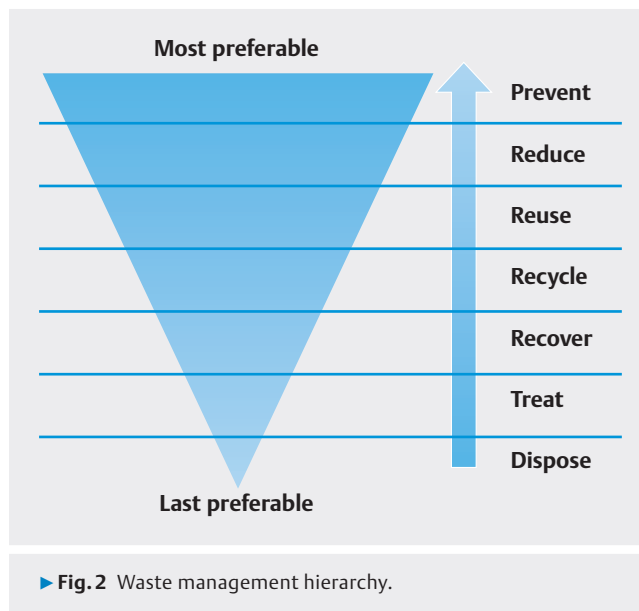
Transportation

These include packaging and transportation of supplies used in endoscopy, which significantly impacts GHG emission and accounts for a significant rate of plastic waste. As a result, about 1 million metric tons of clean plastic is generated by healthcare systems each year, with only a minimal amount of this plastic waste being recovered [33].

Emissions resulting from transportation also include the journey of patients to hospitals, especially referral centers, which are usually further away. To this end, travel generates considerable GHG emissions. Added to this are the costs of transporting materials required by endoscopy units. This cost can be higher depending on the distance between the producer and consumer [9].

Strategies to improve the sustainability of endoscopy

Gastroenterologists and endoscopists should reconsider daily activities and pay more attention to sustainability. The term "green endoscopy" refers to the practice of gastroenterology that aims to raise awareness, assess, and reduce the environ-



mental impact of endoscopy. In this regard, measures may be applied to mitigate carbon footprint and favor the evolution of a more sustainable "green endoscopy".

According to the World Health Organization (WHO), the general strategies for reducing GHG emissions can be summed up in "3 Rs": Reduce, Reuse, Recycle [9, 16]. Other important Rs are Review, Research and Re-invent, Recover, and Repair [36]. All these principles can be applied in endoscopy with a multilevel approach, from individuals to institutions (► Fig. 2).

Inappropriate diagnostic and follow-up examinations

Data show that the rate of inappropriate examinations reach up to 52% of upper gastrointestinal endoscopies and 23% to 52% of colonoscopies [37]. A recent study estimates that the carbon cost of inappropriate esophagogastroduodenoscopy and colonoscopy in Italy was 4133 CO₂ metric tons/year, ranging from 3527 to 4749, and equivalent to 1,760,446 L of gasoline consumed. When translating these data to other European countries, the estimated carbon footprint of inappropriate digestive endoscopy in Europe is estimated to be 30,804 metric tons [18].

Therefore, this represents a relevant issue in endoscopy units. A first step in reducing the number of inappropriate diagnostic examinations is to rationalize the number of procedures requested for young patients without risk factors or alarm symptoms.

Another point is reducing inappropriate endoscopic follow-up. The most frequent cases are follow-up of chronic distal atrophic gastritis without dysplasia and no additional risk factors, peptic duodenal disease, or low-risk polyps removed at colonoscopy. In these cases, it is important to avoid unnecessary testing and ultimately reduce GHG emissions [38].

In this regard, international guidelines for improving endoscopic appropriateness should guide clinical practice on indica-

► **Table 2** Digestive findings that might not require endoscopic surveillance.

	Condition	Prevalence	Malignancy risk
Esophagus	Inlet patch	0.1 %-12 %	0%-1.6 % risk of dysplasia
	Erosive esophagitis LA grade A or B	11%	0%-9% risk of Barrett's esophagus
	< 1 cm columnar-lined esophagus	10%	No increased risk of esophageal cancer
Stomach	Intestinal metaplasia or atrophy limited to one location (i. e., antrum or corpus only) without dysplasia	Up to 25%	0.55% risk of progression to gastric cancer
	Fundic gland polyps	13%-77%	No documented risk of gastric cancer if < 1 cm and no suspicious features
Subepithelial lesions	Leiomyoma	0.08%-0.43%	Benign lesion
	Lipoma	0.2%	Benign lesion
	Pancreatic rest	0.6%-13.7%	Anecdotal malignant transformation
Duodenum	Duodenal peptic ulcer	2%-13%	No cancer risk
Pancreas	Serous cystic neoplasm	Up to 16% of pancreatic cystic neoplasms	Benign lesion
Colon	Low-risk adenomas (adenoma < 10 mm without high grade dysplasia, or < 4 adenomas, or serrated polyp < 10 mm without dysplasia).	~ 15 %-30%	No increased risk versus general population

LA, Los Angeles.

tions for surveillance and diagnostic endoscopy (► **Table 2**) [36, 39, 40].

Moreover, several noninvasive biomarkers can be used, which allows endoscopy to be avoided in diagnosis or follow-up of some gastrointestinal diseases. For instance, the Baveno VI criteria (i. e., liver stiffness measured [LSM] < 20 kPa and platelets > 150 × 10⁹/L) can be used to predict patients with advanced chronic liver disease in whom the risk of varices is low and upper endoscopy deemed unnecessary [41, 42].

Concerning the lower gastrointestinal tract, the fecal immunochemical test is used as a primary screening method for colorectal cancer, ruling out non-at-risk patients in whom colonoscopy is not indicated [43].

In addition, in patients with inflammatory bowel disease (IBD), fecal calprotectin is used as a noninvasive marker of response, reducing the need for endoscopic follow-up and to rule out organic diseases in patients with functional disorders [44].

Biopsy sampling and histology

As discussed above, processing of biopsy samples taken during endoscopy is responsible for high GHG emission. Above all, this concerns all the steps necessary for sample processing, production and travel of chemical reagents, production of waste, and electricity consumption [35].

Therefore, it is essential to apply mitigation strategies aimed at limiting histological examination only to necessary cases, informed by guidelines and correct number of samples [45, 46].

Furthermore, innovations in endoscopic imaging (e. g. virtual chromoendoscopy and magnification) have improved mucosal visualization and endoscopic diagnosis. These improvements help to identify low-risk lesions such as hyperplastic polyps which enables a “resect-and-discard” and/or “diagnose and leave” approach, thus avoiding unnecessary histology [47].

Looking ahead, implementation of artificial intelligence with computer-aided characterization will allow a further gain in optical diagnosis in favor of strategies that do not require histology [48].

Minimization of procedure rescheduling

Another crucial area has to do with reducing the number of endoscopic exams that have to be rescheduled due to noncompliance with guidelines or quality measures. This frequently occurs in patients who undergo colonoscopy without achieving adequate bowel cleansing, upper endoscopy without following the dietary rules, or operative procedures without suspension of antiplatelet/anticoagulant agents, when requested. This goal can be met by improving patient communication.

Concerning colonoscopy, instructions on diet and bowel preparation must be provided in written form, the solution for preparation must be chosen among those recommended by the guidelines, performed in a split fashion, and colonoscopy must be performed within 5 hours following bowel preparation [49, 50].

Furthermore, at the preliminary colonoscopy interview, concomitant therapy must be investigated and possible intake of

antiplatelet and/or anticoagulant drugs managed preventively in accordance with the guidelines [51].

Resource optimization

Wasteful use of resources within an endoscopy unit leads to higher cost and environmental impact. Strategies aimed at optimizing resources should be adopted. For example, PPE-related waste may be minimized by bringing together at-risk patients on the same endoscopy list.

Sterile endoscopic water should also be limited to patients at high risk of infection such as immunocompromised patients. Tap water should be used routinely in the irrigation bottle because it has been demonstrated to be as safe as sterile water. This would have both environmental and economic impacts [52].

Moreover, adoption of washable and reusable accessories should be considered when feasible, but evaluated case by case because it is not always supported by robust scientific evidence.

Finally, use of recyclable materials can increase sustainability and purchase of local products can reduce transport distances.

Energy optimization

Energy consumption from electricity accounts for 10% to 30% of the environmental impact of individuals and healthcare systems [9].

Use of electricity is another element that contributes to the environmental impact of endoscopy. Green use of energy should be promoted in all endoscopy units: lights should be turned off when not in use for long periods, halogen should be replaced by LED lights, heating and air conditioning should be optimized to maintain a comfortable ambient temperature, computers shut down overnight, and use of renewable energies (e.g. photovoltaic) should be promoted when possible [9]. Finally, rechargeable batteries should be preferred over standard ones.

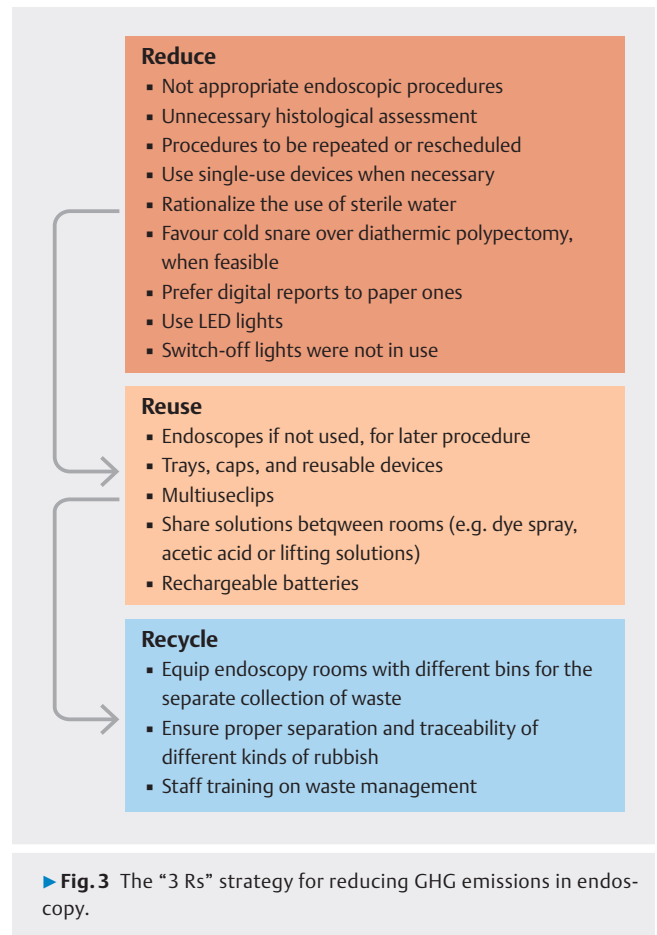
Waste minimization, reuse, and recycling

Waste management and proper disposal contribute to reducing GHG emissions.

As discussed above, the waste management hierarchy should be based on the concept of the “3Rs”: reduce, reuse, and recycle (► Fig. 3).

The most preferable approach should be avoiding production of waste as much as possible and minimizing the quantity entering the waste stream. Where feasible, according to best practice, recovering items for secondary use is the most preferable option. Waste that cannot be recovered must then be dealt with by the least preferable options, such as treatment or land disposal, to reduce its health and environmental impacts [53].

Endoscopy rooms should have a plan for proper waste disposal, with separate bins dedicated to each item (paper, plastic, glass, etc.) to ensure proper recycling.



Telemedicine and electronic records

Migration of patients toward tertiary treatment centers, which are generally located at greater distances, can add to transport-associated emissions. The COVID pandemic has accelerated the spread of telemedicine, which now represents a fundamental resource for the healthcare system. Data show that telemedicine is highly effective and affordable. Moreover, it may reduce transport-associated emissions with carbon footprint savings ranging from 0.70 to 372 kg CO₂ per consultation [54].

In addition, use of paperless communication, electronic reports/letters, and encouraging patients to sign up to view their results online would save both paper and gas mileage [26]. Adopting double-sided printing or reducing the number of printed copies can also have a small but positive environmental effect [14].

Telemedicine can be used for follow-up visits with patients who have chronic diseases such as chronic liver disease or IBD or reviewing laboratory tests or histological reports (such as following endoscopy) [55, 56, 57].

In addition, teleconsultation can be used for consultations between specialists and meetings with multidisciplinary teams.

Moreover, in the field of digital technologies, use of electronic medical records as well as generation of digital reports over paper copies may improve not only the accessibility of information, but also the environmental impact.

Role of institutions and scientific societies

Institutions will play a key role in determining the environmental sustainability of endoscopy. First, increasing physician and staff awareness is needed, which can be achieved by implementing educational programs.

Second, partnering with industry is important for creating a shared vision aimed at reducing direct and indirect emissions. It will be crucial to share strategies with manufacturers aimed at optimizing production, product packaging, and distribution.

Furthermore, providing financial incentives may support eco-friendly projects and facilitate sustainable transitions.

Scientific societies will play a decisive role in this process. Many of them have already issued consensus statements that summarize guidelines to be adopted for green endoscopy, including the Association of the European Society of Gastrointestinal Endoscopy (ESGE) and European Society of Gastroenterology and Endoscopy Nurses and Associates (ESGENA) [58], the British Society of Gastroenterology (BSG) [59], and the Italian Association of Hospital Gastroenterologists and Digestive Endoscopists (AIGO) [36].

In the future, it would be desirable for other national scientific societies to do so by issuing tailored position statements at the national level, based on geographical differences and local needs. In addition to formal recommendations, a periodic audit to verify the adherence of individual endoscopy units to recommended standards, at least to the essential and evidence-based ones, and accreditation of green endoscopy on the national level, will be necessary [10].

Moreover, scientific societies should act to encourage educational models and promote further research on green endoscopy, which can be aided with the provision of sustainability grants. Finally, they should promote regulation regarding the environmental sustainability of educational events. These represent another relevant source of carbon footprint derived from consumption of electricity, production of waste, and travel necessary to reach the venue. In this regard, frequency of in-person events, their duration, as well as the number of participants should be limited, in favor of online or hybrid ones. Furthermore, in-person meetings should also respect sustainability criteria related to factors such as low energy consumption and absence of non-recyclable materials.

The next step is to seek individuals who can support the change both at management and grass roots levels, creating a “guiding coalition” and constant presence. This would involve making changes that are easy to achieve by staff members but have a significant impact [14].

Conclusions

The climate crisis calls for quick and decisive action. In this setting, the healthcare system contributes significantly to the climate crisis, but it has the opportunity to be part of the solution. Therefore, it must be involved in raising awareness and helping to develop regulatory guidelines aimed at mitigating GHG emissions.

Concerning endoscopy, the near future goal is to make endoscopy units “green” through uniform worldwide action. Measures aimed at reducing emissions have been mentioned above; careful evaluation of indications for endoscopic and histological examinations, rationalization of disposable devices, careful management of PPE, optimization of energy use, and correct waste disposal are practical strategies.

Moreover, a fundamental role will be played by telemedicine to reduce environmental impact linked to transport of patients for follow-up visits. Looking ahead, endoscopy units will have to be evaluated in terms of performance and efficiency globally. To this end, sustainability should now be considered a central domain of quality in healthcare, extending the responsibility of health services to both current and future patients.

We believe that healthcare institutions will also play a key decision-making role in this green transition. Economic investments and partnership with stakeholders in terms of enhancing the economic, social, and environmental impacts of health care will be essential to achieving these goals.

However, the cultural aspect also plays a key role. Therefore, in addition to focusing on general regulation, it will be necessary to invest in education of younger generations. To this end, schools should include curriculum focused on a greener climate.

For trainees, it is crucial that the concept of green endoscopy is formally included into the endoscopy training program from the beginning.

In conclusion, it is time to act at multiple levels to ensure green endoscopy worldwide. While this requires massive change, we can no longer continue hearing examples of how many football fields are needed to accommodate waste from a hospital ward or how many acres of forest would be needed to clean up the CO₂ emitted by a hospital. We need to move the conversation forward with sustainable action. We must work closely together to ensure the present and future sustainability of our planet and health.

Conflict of Interest

The authors declare that they have no conflict of interest.

References

- [1] NOAA National Centers for Environmental Information. Monthly global climate report for September 2022. Accessed November 17, 2022: <https://www.ncei.noaa.gov/access/monitoring/monthly-report/global/202209>
- [2] Vaccari M, Tudor T, Perteghella A. Costs associated with the management of waste from healthcare facilities: An analysis at national and site level. *Waste Management Res* 2018; 36: 39–47 doi:10.1177/0734242X17739968
- [3] Sun T, Ocko IB, Sturcken E et al. Path to net zero is critical to climate outcome. *Scientific Rep* 2021; 11: 22173 doi:10.1038/s41598-021-01639-y
- [4] Casadevall A. Climate change brings the specter of new infectious diseases. *J Clin Invest* 2020; 130: 553–555 doi:10.1172/JCI135003

- [5] Andrade L, O'Dwyer J, O'Neill E et al. Surface water flooding, ground-water contamination, and enteric disease in developed countries: A scoping review of connections and consequences. *Environment Pollution (Barking, Essex: 1987)* 2018; 236: 540–549
- [6] Swinburn BA, Kraak VI, Allender S et al. The Global syndemic of obesity, undernutrition, and climate change: The Lancet Commission report. *Lancet (London, England)* 2019; 393: 791–846
- [7] Wu JC. Psychological co-morbidity in functional gastrointestinal disorders: Epidemiology, mechanisms and management. *J Neurogastroenterol Motility* 2012; 18: 13–18 doi:10.5056/jnm.2012.18.1.13
- [8] Accessed December 18, 2023: <https://unfccc.int/cop27>
- [9] Siau K, Hayee BH, Gayam S. Endoscopy's current carbon footprint. *Tech Innovations Gastrointest Endosc* 2021; 23: 344–352
- [10] Gayam S. Environmental impact of endoscopy: "Scope" of the problem. *Am J Gastroenterol* 2020; 115: 1931–1932 doi:10.14309/ajg.0000000000001005
- [11] Lacroute J, Marcantoni J, Petitot S et al. The carbon footprint of ambulatory gastrointestinal endoscopy. *Endoscopy* 2023; 55: 918–926 doi:10.1055/a-2088-4062
- [12] Henniger D, Windsheimer M, Beck H et al. Assessment of the yearly carbon emission of a gastrointestinal endoscopy unit. *Gut* 2023; 72: 1816–1818 doi:10.1136/gutjnl-2023-329940
- [13] Le NNT, Hernandez LV, Vakil N et al. Environmental and health outcomes of single-use versus reusable duodenoscopes. *Gastrointest Endosc* 2022; 96: 1002–1008 doi:10.1016/j.gie.2022.06.014
- [14] Donnelly L. Green endoscopy: practical implementation. *Frontline Gastroenterol* 2022; 13: e7–e12 doi:10.1136/flgastro-2022-102116
- [15] Namburam S, von Renteln D, Damianos J et al. Estimating the environmental impact of disposable endoscopic equipment and endoscopes. *Gut* 2022; 71: 1326–1331
- [16] Baddeley R, Aabakken L, Veitch A et al. Green endoscopy: Counting the carbon cost of our practice. *Gastroenterology* 2022; 162: 1556–1560 doi:10.1053/j.gastro.2022.01.057
- [17] López-Muñoz P, Martín-Cabezuelo R, Pons-Beltrán V et al. Carbon footprint determination of single-use endoscope. *ESGE Days 2022. Endoscopy* doi:10.1055/s-0042-174500
- [18] Elli L, La Mura S, Rimondi A et al. The carbon cost of inappropriate endoscopy. *Gastrointest Endosc* 2024; 99: 137–134.e3
- [19] López-Muñoz P, Martín-Cabezuelo R, Lorenzo-Zúñiga V et al. Life cycle assessment of routinely used endoscopic instruments and simple intervention to reduce our environmental impact. *Gut* 2023; 72: 1692–1697 doi:10.1136/gutjnl-2023-329544
- [20] NHS England. NHS net Zero—Call for evidence. 2020: Accessed December 18, 2023: <https://www.engage.england.nhs.uk/survey/nhs-net-zero/>
- [21] Perisetti A, Desai M, Bourke MJ et al. Production and possible reduction of greenhouse gases produced during GI endoscopy activity: a systematic review of available literature. *Gut* 2023; 72: 493–500
- [22] World Resources Institute. Greenhouse gas protocol. Accessed December 17, 2023: <https://ghgprotocol.org/corporate-standard>
- [23] Goldis A, Goldis R, Chirila TV. Biomaterials in gastroenterology: A critical overview. *Medicina (Kaunas)* 2019; 55: 734 doi:10.3390/medicina55110734
- [24] Volenec K, Pohl I. The challenges: Stent materials from the perspective of the manufacturer. *Int J Gastrointest Interv* 2016; 5: 98–104
- [25] Larsen S, Russell RV, Ockert LK et al. Rate and impact of duodenoscope contamination: A systematic review and meta-analysis. *EClinicalMedicine* 2020; 25: 100451 doi:10.1016/j.eclinm.2020.100451
- [26] Balan GG, Sfarti CV, Chiriac SA et al. Duodenoscope-associated infections: a review. *Europ J Clin Microb Infect Dis* 2019; 38: 2205–2213 doi:10.1007/s10096-019-03671-3
- [27] Repici A, Khalaf K, Troncone E et al. International Delphi Consensus Study on disposable single-use endoscopy: A path to clinical adoption. *Digest Liver Dis* 2024; 56: 322–329 doi:10.1016/j.dld.2023.07.026
- [28] Agrawal D, Tang Z. Sustainability of single-use endoscopes. *Tech Innov Gastrointest Endosc* 2021; 23: 353–362
- [29] Lenti MV, Girardi D, Muzzi A et al. Prevalence and risk factors for multi-drug resistant bacterial infections in patients undergoing endoscopic retrograde cholangiopancreatography. *Digest Liver Dis* 2023; 55: 1447–1449 doi:10.1016/j.dld.2023.06.018
- [30] Peery AF, Crockett SD, Murphy CC et al. Burden and cost of gastrointestinal, liver, and pancreatic diseases in the United States: Update 2018. *Gastroenterology* 2019; 156: 254–272.e211
- [31] Maida M, Sferrazza S, Savarino E et al. Impact of the COVID-19 pandemic on Gastroenterology Divisions in Italy: A national survey. *Digest Liver Dis* 2020; 52: 808–815 doi:10.1016/j.dld.2020.05.017
- [32] Rizan C, Reed M, Bhutta MF. Environmental impact of personal protective equipment distributed for use by health and social care services in England in the first six months of the COVID-19 pandemic. *J Royal Soc Med* 2021; 114: 250–263 doi:10.1177/01410768211001583
- [33] Rizan C, Bhutta MF, Reed M et al. The carbon footprint of waste streams in a UK hospital. *Journal of Cleaner Production* 2021; 286: 125446 doi:10.1016/j.jclepro.2020.125446
- [34] Vassallo R, Venezia L, Zullo A et al. Safety and protection in endoscopic services during phase II of COVID-19 pandemic: a national survey. *Europ J Gastroenterol Hepatol* 2021; 33: 974–976
- [35] Gordon IO, Sherman JD, Leapman M et al. Life Cycle greenhouse gas emissions of gastrointestinal biopsies in a surgical pathology laboratory. *Am J Clin Pathol* 2021; 156: 540–549 doi:10.1093/ajcp/aqab021
- [36] Bortoluzzi F, Sorge A, Vassallo R et al. Sustainability in gastroenterology and digestive endoscopy: Position Paper from the Italian Association of Hospital Gastroenterologists and Digestive Endoscopists (AIGO). *Digest Liver Dis* 2022; 54: 1623–1629
- [37] Frazzoni L, La Marca M, Radaelli F et al. Systematic review with meta-analysis: the appropriateness of colonoscopy increases the probability of relevant findings and cancer while reducing unnecessary exams. *Aliment Pharmacol Ther* 2021; 53: 22–32
- [38] Bjørsum-Meyer T, Toth E, Koulaouzidis A. Carbon footprint from superfluous colonoscopies: potentialities to scale down the impact. *Gut* 2022: doi:10.1136/gutjnl-2021-326587
- [39] Rodríguez-de-Santiago E, Frazzoni L, Fuccio L et al. Digestive findings that do not require endoscopic surveillance – Reducing the burden of care: European Society of Gastrointestinal Endoscopy (ESGE) Position Statement. *Endoscopy* 2020; 52: 491–497
- [40] Early DS, Ben-Menachem T, Decker GA et al. Appropriate use of GI endoscopy. *Gastrointestinal endoscopy* 2012; 75: 1127–1131 doi:10.1016/j.gie.2012.01.011
- [41] de Franchis R, Bosch J, Garcia-Tsao G et al. Baveno VII - Renewing consensus in portal hypertension. *J Hepatol* 2022; 76: 959–974 doi:10.1016/j.jhep.2021.12.022
- [42] Pallio S, Melita G, Shahini E et al. Diagnosis and management of esophagogastric varices. *Diagnostics (Basel, Switzerland)* 2023; 13: 1031
- [43] Maida M, Macaluso FS, Ianiro G et al. Screening of colorectal cancer: present and future. *Expert Rev Anticancer Ther* 2017; 17: 1131–1146 doi:10.1080/14737140.2017.1392243
- [44] Plevris N, Lees CW. Disease monitoring in inflammatory bowel disease: evolving principles and possibilities. *Gastroenterology* 2022; 162: 1456–1475.e1451 doi:10.1053/j.gastro.2022.01.024
- [45] Pouw RE, Barret M, Biermann K et al. Endoscopic tissue sampling – Part 1: Upper gastrointestinal and hepatopancreatobiliary tracts. *Eu-*

- ropean Society of Gastrointestinal Endoscopy (ESGE) Guideline. *Endoscopy* 2021; 53: 1174–1188 doi:10.1055/a-1611-5091
- [46] Pouw RE, Bisschops R, Gecse KB et al. Endoscopic tissue sampling – Part 2: Lower gastrointestinal tract. European Society of Gastrointestinal Endoscopy (ESGE) Guideline. *Endoscopy* 2021; 53: 1261–1273 doi:10.1055/a-1671-6336
- [47] Hassan C, Pickhardt PJ, Rex DK. A resect and discard strategy would improve cost-effectiveness of colorectal cancer screening. *Clin Gastroenterol Hepatol* 2010; 8: 865–869.e861–863 doi:10.1016/j.cgh.2010.05.018
- [48] Maida M, Marasco G, Facciorusso A et al. Effectiveness and application of artificial intelligence for endoscopic screening of colorectal cancer: the future is now. *Expert Review Anticancer Ther* 2023; 23: 719–729 doi:10.1080/14737140.2023.2215436
- [49] Maida M, Ventimiglia M, Facciorusso A et al. Effectiveness and safety of 1-L PEG-ASC versus other bowel preparations for colonoscopy: A meta-analysis of nine randomized clinical trials. *Digest Liver Dis* 2023; 55: 1010–1018 doi:10.1016/j.dld.2022.11.010
- [50] Shahini E, Sinagra E, Vitello A et al. Factors affecting the quality of bowel preparation for colonoscopy in hard-to-prepare patients: Evidence from the literature. *World J Gastroenterol* 2023; 29: 1685–1707
- [51] Maida M, Sferrazza S, Maida C et al. Management of antiplatelet or anticoagulant therapy in endoscopy: A review of literature. *World J Gastrointest Endosc* 2020; 12: 172–192 doi:10.4253/wjge.v12.i6.172
- [52] Wilcox CM, Waites K, Brookings ES. Use of sterile compared with tap water in gastrointestinal endoscopic procedures. *Am J Infect Control* 1996; 24: 407–410
- [53] Chartier Y. WHO-Safe management of wastes from health-care activities – 2nd ed. 2014
- [54] Purohit A, Smith J, Hibble A. Does telemedicine reduce the carbon footprint of healthcare? A systematic review *Future Healthc J* 2021; 8: e85–e91 doi:10.7861/fhj.2020-0080
- [55] Costantino A, Bortoluzzi F, Giuffrè M et al. Correct use of telemedicine in gastroenterology, hepatology, and endoscopy during and after the COVID-19 pandemic: Recommendations from the Italian association of hospital gastroenterologists and endoscopists (AIGO). *Digest Liver Dis* 2021; 53: 1221–1227
- [56] Sinagra E, Busacca A, Guida L et al. Telemedicine Is an Effective Tool to Monitor Disease Activity in IBD Patients in the COVID-19 Era: A Single Centre Experience Based on Objective Data. *Gastroenterology Insights* 2022; 13: 117–126 doi:10.3390/gastroent13010013
- [57] Fantini MC, Biancone L, Dragoni G et al. Telemedicine and remote screening for covid-19 in inflammatory bowel disease patients: results from the SoCOVID-19 survey. *Inflam Bowel Dis* 2020; 26: e134–e136
- [58] Rodríguez de Santiago E, Dinis-Ribeiro M, Pohl H et al. Reducing the environmental footprint of gastrointestinal endoscopy: European Society of Gastrointestinal Endoscopy (ESGE) and European Society of Gastroenterology and Endoscopy Nurses and Associates (ESGENA) Position Statement. *Endoscopy* 2022; 54: 797–826
- [59] Sebastian S, Dhar A, Baddeley R et al. Green endoscopy: British Society of Gastroenterology (BSG), Joint Accreditation Group (JAG) and Centre for Sustainable Health (CSH) joint consensus on practical measures for environmental sustainability in endoscopy. *Gut* 2023; 72: 12–26 doi:10.1136/gutjnl-2022-328460

CORRECTION

Green endoscopy, one step toward a sustainable future: Literature review

Marcello Maida, Alessandro Vitello, Endrit Shahini et al. *Endoscopy International Open* 2024; 12: E968–E980. DOI: 10.1055/a-2303-8621

In the above-mentioned article institution 4 was corrected. This was corrected in the online version on 13.09.2024.