

Contents lists available at [ScienceDirect](https://www.sciencedirect.com)

The Saudi Dental Journal

journal homepage: www.ksu.edu.sa
www.sciencedirect.com

Indirect orthodontic bonding using an original 3D method compared with conventional technique: A narrative review

Riccardo Nucera^a, Angela Militi^a, Andrea Caputo^a, Angela Mirea Bellocchio^a,
Giuseppe Minervini^{b,*}, Gabriele Cervino^{a,*}, Marco Portelli^{a,*}^a Department of Biomedical Sciences, Dentistry and Morphological and Functional Imaging, University of Messina, Via Consolare Valeria 1, Messina, Italy^b Multidisciplinary Department of Medical-Surgical and Dental Specialties, University of Campania "Luigi Vanvitelli", 80100 Napoli, Italy

ARTICLE INFO

Keywords:

Indirect Orthodontic Bonding
CBCT
CAD-CAM

ABSTRACT

As well known success in orthodontics is related to a correct diagnosis and to a careful treatment planning. Our study aims to provide clinician with a reproducible and precise method, for orthodontic indirect bonding, thanks to CBCT images and due to a CAD-CAM process. Methods: A case of an orthodontic treatment plan, of a female patient, 37 years old, was selected. Plaster models were digitally acquired using the Extra-Oral scanner Maestro 3D and processed within the Studio Maestro 3D software. CBCT images in DICOM format were imported into the MIMICS software, in order to perform the segmentation of the dental elements, and to obtain a three-dimensional coronal-root dental arches model. The DICOM file thus processed was exported in an STL file, reworked with Meshmixer software to improve image quality, and imported into the 3D Maestro software to be superimposed on the digital model. In this way a three-dimensional real model of the dental arches was developed. After an accurate orthodontic virtual set-up, we proceeded to brackets positioning on the 3D model of the dental arches. Subsequently, a virtual transfer template was created, in order to carry out the digital printing of a thermo-printed mask necessary to perform an indirect bonding of the orthodontic appliance. Results: The original digital workflow proposed in this study allows the development of a real and non-ideal three-dimensional coronal-root model of the dental arches; this model can be used for indirect orthodontic bonding eliminating any errors in the expression of 1st, 2nd and 3rd order information of the pre-informed orthodontic appliance. Conclusions: Technological advancements in oral scanning and 3D printing will allow the achievement of an easy and reproducible ideal positioning of the orthodontic brackets.

1. Background

Indirect orthodontic bonding is a method developed by Silverman [Silverman et al., 1972] increasingly used in the clinical practice. From an accurate review of literature emerged that indirect bonding have several advantages if compared to the direct one such as; comfort for the patient [Burhardt et al., 2016], easy reproduction of bracket position, better adhesive performance [Sabbagh et al., 2022], and greater clinical efficiency and effectiveness thank to shorter chair-time and to the reduction of treatment duration and staff required [Nawrocka et al., 2020].

Carlson and Johnson [Carlson and Johnson, 2001] indicated four parameters that must be considered during brackets' positioning: (1) bracket base adaptation to the contour of the tooth surface, (2)

evaluation of the rotational position of each bracket from the occlusal direction, (3) determination of the vertical position of each bracket, and (4) determination of the desired slot angulations of each bracket by evaluating the position of the roots.

As demonstrated by Rosti [Rosti et al., 2019] indirect digital bonding can be particularly advantageous in clinical practice, especially in cases where 3D customized lingual brackets is used.

Several studies have widely demonstrated that indirect bonding is a more reliable and accurate method than direct bonding, especially for vestibular appliances, resulting in a better expression of tip, torque, and in-out informations [Nichols et al., 2013; Kalange, 2004].

Hodge [Hodge et al., 2004] stated that the main advantage of indirect bonding over direct bonding is a reduction in the envelope of error in bracket position in each of the 3 orientations examined (vertical,

* Corresponding authors.

E-mail addresses: riccardo.nucera@unime.it (R. Nucera), amiliti@unime.it (A. Militi), Andrea.cpt96@gmail.com (A. Caputo), angelamirea@live.it (A.M. Bellocchio), Giuseppe.minervini@unicampania.it (G. Minervini), gcervino@unime.it (G. Cervino), mportelli@unime.it (M. Portelli).

<https://doi.org/10.1016/j.sdentj.2023.09.009>

Received 19 June 2023; Received in revised form 22 September 2023; Accepted 25 September 2023

Available online 5 October 2023

1013-9052/© 2023 The Authors. Production and hosting by Elsevier B.V. on behalf of King Saud University. This is an open access article under the CC BY-NC-ND license (<http://creativecommons.org/licenses/by-nc-nd/4.0/>).

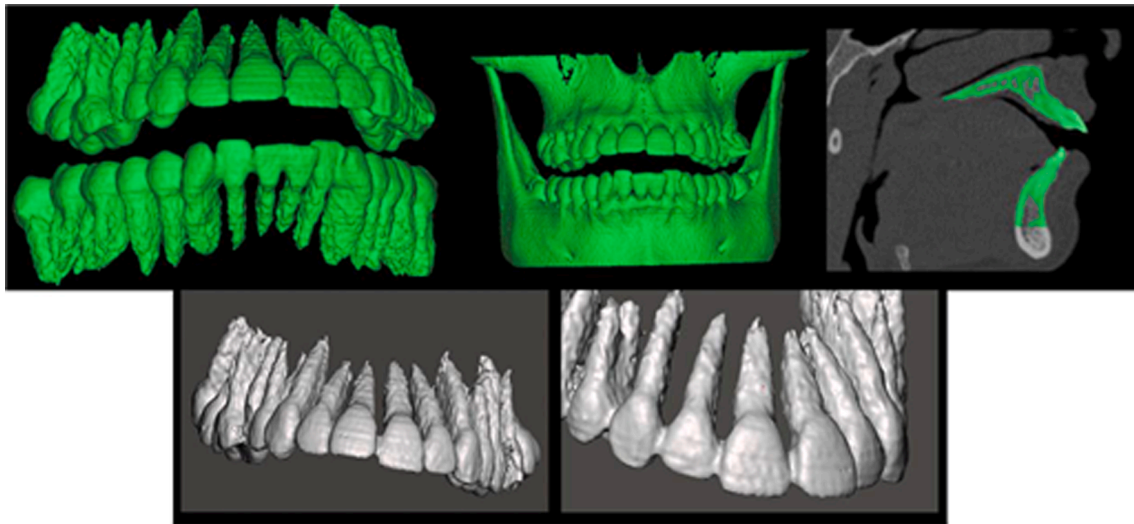


Fig. 1. 3D dental models.

horizontal, and angular).

From a review of literature is possible to state that indirect bonding have several advantages if compared to the direct one, especially in cases of straight-wire biomechanics.

Success in orthodontics is related to a correct diagnosis and careful treatment planning. Straight-wire techniques require an extremely accurate brackets positioning; during this procedure errors can be related to dental anatomy, transfer devices, adhesive procedure, clinical efficiency and patient management. The careful evaluation of all these factors will allow clinician to obtain an ideal positioning of orthodontic appliance [Grunheid et al, 2016].

Nowadays CAD/CAM, find an increasing use in orthodontic clinical practice; based on a virtual model is possible infact to design and then printing a transfer mask usefull for indirect orthodontic bonding [Kulkarni and Goyal, 2022, Kulkarni et al., 2021].

Setup models indicate only crowns' position, without informations on roots and bone; by now only few contributions propose the use of 3D RX and laser scan to create a 3D virtual model [Xue et al., 2020].

Roots' position control is very important in order to avoid cortical bone fenestration and-or roots' resorptions [Weltman et al., 2010]; orthodontic tretament planning should evaluate not only crowns' position but also roots' one.

Recently CBCT technology has been widely used in dentistry, as it

represents a valid alternative to Computed Tomography (CT), with a significant reduction in radiation dose, costs and exposure times [Coriasco et al., 2013; Fastuca et al., 2017; Portelli et al., 2018].

CBCT can be useful in several clinical cases such as dental anomalies [Lo Giudice et al., 2017; Militi et al. 2011; Vitale et al., 2009], skeletal malocclusions, Temporo Mandibular Joint pathologies [Portelli et al., 2009, 2015], mini screw insertion [Nucera et al., 2019], assessment of growth patterns [Portelli et al., 2009], and impacted or missing teeth [Portelli et al., 2019, 2016].

Despite the significant increase of CBCT in dentistry, to date, the literature does not provide guidelines for a 3D set up model. Our study, therefore, aims to provide the clinician with a reproducible and precise method, as a tool for an accurate diagnostic framework and effective treatment planning.

2. Case presentation

The original digital work-flow proposed in this study is referred to a female patient, 37 years old, affected by third molar disodontiasis and complained of significant aesthetic discomfort related to dental malocclusion; after the first visit patient has been referred to the Orthodontics Department of the Messina University Hospital for a specialistic evaluation. Patient was considered suitable for the present study as she was

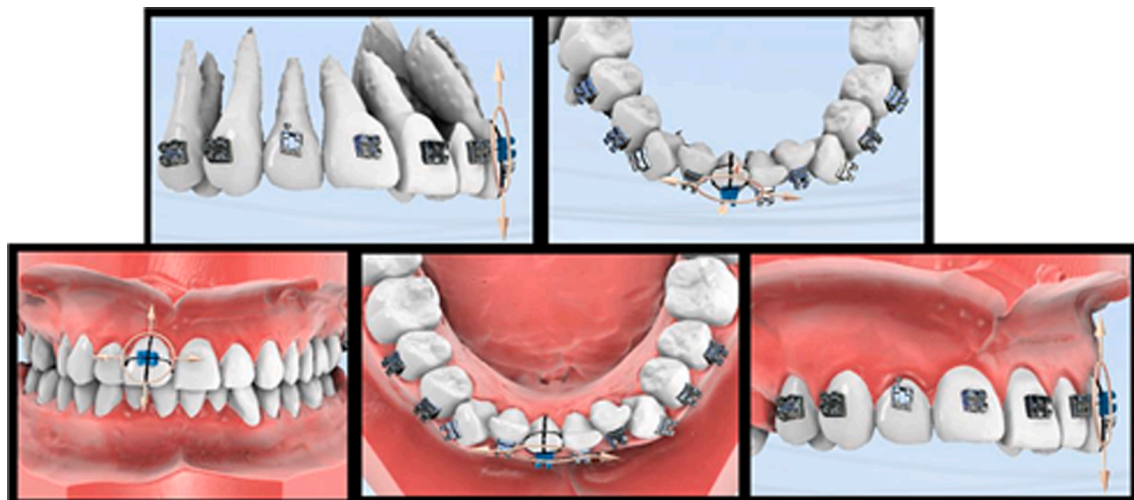


Fig. 2. Dental elements segmentation.

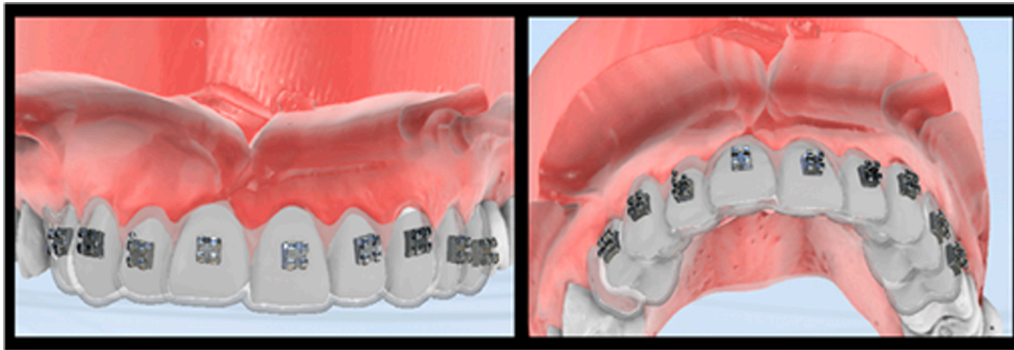


Fig. 3. Facial axis of the clinical crown evaluation.

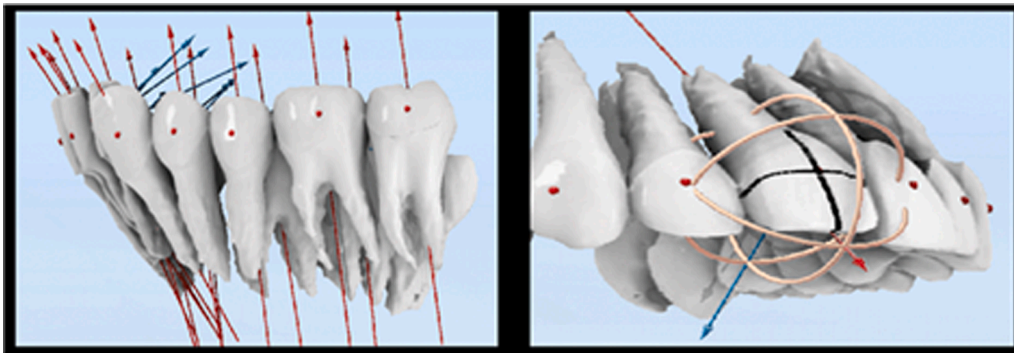


Fig. 4. Digital brackets' positioning.

affected both by dental malocclusion, susceptible of orthodontic correction, and by third molars disodontiasis, which represents a valid indication to perform a 3D evaluation, according to the ALARA principles [Portelli et al., 2016]. An informed consent for the therapy and a privacy form was acquired. At the extraoral examination, the patient presents a modest degree of facial asymmetry and a bi-protruded profile. At the intraoral examination patients show:

- Moderate bimaxillary dental crowding
- A slight deviation to the left of the mandibular inter-incisive midline
- Bilateral cuspid fang molar first-class relationship

2.1. Methodology

Silicone impressions of both dental arches were taken and an occlusal registration wax was acquired. After plaster models

development, the digital acquisition was carried out using the Extra-Oral scanner Maestro 3D and processed within the Studio Maestro 3D software. A segmentation of the crowns of the dental elements and a measurement of their dimensions were performed to evaluate the Bolton index (Fig. 1).

CBCT images in DICOM format were imported into the MIMICS software, to perform the segmentation of the dental elements. The DICOM file thus processed was exported in an STL file and imported into the Meshmixer software to improve the image quality with a smooth technique (Fig. 2).

The STL file thus reworked was exported by Meshmixer and imported into the 3D Maestro software to be superimposed on the digital model.

In this way a 3D real model of the dental arches has been developed. An effective and reproducible identification of the patient's real facial axis of the clinical crown (FACC) was performed to programme a reliable virtual set-up of orthodontic dental movements (Fig. 3).

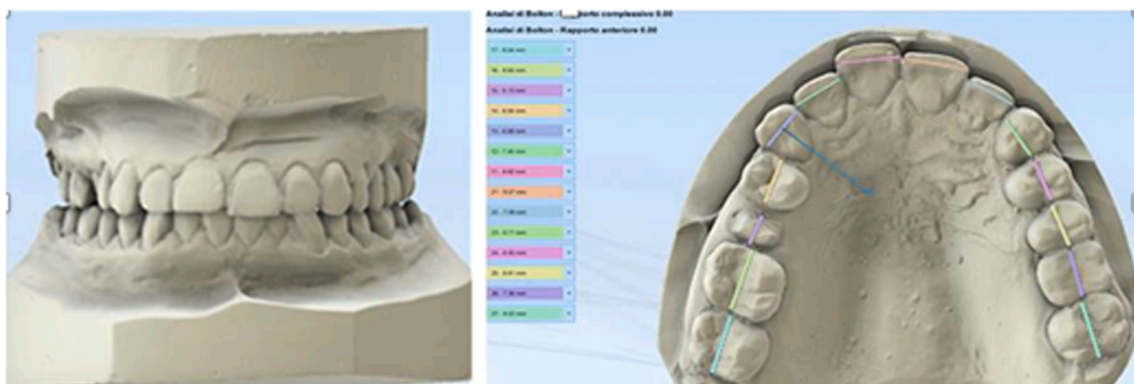


Fig. 5. Indirect bonding transfer mask.

According to our virtual treatment objectives (VTO), we have reproduced the desired tooth movements. After an accurate orthodontic virtual set-up, we proceeded to brackets positioning on the 3D models, making particular attention to the gingival soft tissues emergence (Fig. 4).

Subsequently, a virtual transfer template was created, to carry out the digital printing of a thermo-printed mask for indirect bonding (Fig. 5).

The original digital workflow proposed allows easy, effective and efficient positioning of orthodontic appliance, avoiding any positioning error.

To avoid any risk of bias in the reference list, manuscript has been checked with the Fi-index tool and obtained a score of 0.88 for the first author only on the date 28/04/2023 according to SCOPUS® [Fiorillo and Ciccù, 2022a, 2022b].

3. Discussion

Accurate bracket positioning is a key factor in orthodontics, especially in straight-wire technique; a correct positioning of the appliance minimize infact bracket repositioning or arch-wire bending [Schmid et al., 2018].

Indirect digital bonding can be particularly advantageous in clinical practice [Czolgosz and Cattaneo, 2021] but requires more extra-clinical work time and higher costs [Aksakalli and Demir, 2012]; the use of CAD-CAM systems could reduce both production costs and manufacturing defects.

The purpose of this study was to increase the synergy between indirect technique and digital programming [Wang et al., 2022] and obtain a reproducible procedure for brackets positioning [Bachour et al., 2022], based on the real anatomy of dental arches.

Real morphology and position of roots and crowns is essential during orthodontic treatment planning, to correctly program orthodontic tooth movements; it allows infact a precise and reproducible identification of the facial axis of the clinical crown that is an essential step to avoid the inadequate expression of tip, torque and in-out [Fontana et al., 2021; Sambataro et al., 2019; Militi et al., 2020; Troiano et al., 2018; Sortino and Ciccù, 2011; Lo Giudice et al., 2012].

4. Conclusions

The original digital workflow proposed in this study allows:

- Development of a real and non-ideal 3D model of the dental arches.
- Correct and reproducible identification of the FACC.
- Elimination of any errors in the expression of 1st, 2nd and 3rd order information.
- Evaluation in the virtual set-up phase of any coronal-root interference.

In conclusion, technological advancements in oral scanning and 3D printing will allow the achievement of an easy and reproducible ideal positioning of the orthodontic brackets.

Future prospects are to standardize the method in order to be simplified and reproducible even to orthodontists not so well trained.

Declaration of Competing Interest

The authors declare that they have no known competing financial interests or personal relationships that could have appeared to influence the work reported in this paper.

Acknowledgments

The authors would like to acknowledge Luis Eduardo Almeida, native English speaker who works at the Department of Surgical Sciences, School of Dentistry, Marquette University, Milwaukee, WI, USA, for reviewing and correcting the scientific English of the article.

References

- Aksakalli, S., Demir, A., 2012. Indirect bonding: a literature review. *Eur J General Dentistry* 1, 6.
- Bachour, P., Klabunde, R., Grünheid, T., 2022. Transfer accuracy of 3D-printed trays for indirect bonding of orthodontic brackets. *Angle Orthod.* 92 (3), 372–379.
- Burhardt, L., Livas, C., Kerdijk, W., Wan der Meer, W.J., Ren, Y., 2016. Treatment comfort, time perception, and preference for conventional and digital impression techniques: a comparative study in young patients. *Am. J. Orthod. Dentofac. Orthop.* 150 (1), 261–267.
- Carlson, K., Johnson, E., 2001. Bracket positioning and resets: five steps to align crowns and roots consistently. *Am. J. Orthod. Dentof. Orthop.* 119 (1), 76–80.
- Cordasco, G., Portelli, M., Militi, A., Nucera, R., Lo Giudice, A., Gatto, E., Lucchese, A., 2013. Low-dose protocol of the spiral CT in orthodontics: Comparative evaluation of entrance skin dose with traditional X-ray techniques. *Prog. Orthod.* 14, 24.
- Czolgosz, I., Cattaneo, P.M., Cornelis, M.A., 2021. Computer-aided indirect bonding versus traditional direct bonding of orthodontic brackets: bonding time, immediate bonding failures, and cost-minimization. A randomized controlled trial. *Eur. J. Orthod.* 43 (2), 144–151.
- Fastuca, R., Lorusso, P., Lagravère, M.O., Michelotti, A., Portelli, M., Zecca, P., D'Antò, V., Militi, A., Nucera, R., Caprioglio, A., 2017. Digital evaluation of nasal changes induced by rapid maxillary expansion with different anchorage and appliance design. *BMC Oral Health* 17, 113.
- Fiorillo, L., Ciccù, M., 2022a. Fi-Index: a new method to evaluate authors hirsch-index reliability. *Res. Quart.* <https://doi.org/10.1007/s12109-022-09892-3>.
- Fiorillo, L., Ciccù, M., 2022b. The use of Fi-index tool to assess per-manuscript self-citations. *Res. Quart.* <https://doi.org/10.1007/s12109-022-09920-2>.
- Fontana, M., Fastuca, R., Zecca, P.A., Nucera, R., Militi, A., Lucchese, A., Portelli, M., Caprioglio, A., 2021. Correlation between mesio-distal angulation and bucco-lingual inclination of first and second maxillary premolars evaluated with panoramic radiography and cone-beam computed tomography. *Appl. Sci.* 11, 2374.
- Grünheid, T., Lee, M.S., Larson, B.E., 2016. Transfer accuracy of vinyl polysiloxane trays for indirect bonding. *Angle Orthod.* 86, 468–474.
- Hodge, T.M., Dhoptkar, A.A., Rock, W.P., Spary, D.J., 2004. A randomized clinical trial comparing the accuracy of direct versus indirect bracket placement. *J. Orthod.* 31 (2), 132–137.
- Kalange, J.T., 2004. Indirect bonding: a comprehensive review of the advantages. *World J. Orthod.* 5 (4), 301–307.
- Kulkarni, N., Goyal, S., 2022. Comparison of bracket failure rate between two different materials used to fabricate transfer trays for indirect orthodontic bonding. *J. Contemp Dent Pract.* 23 (3), 307–312.
- Kulkarni, N., Goyal, S., Dinesh, S.A.V., 2021. 3D printing pen: a novel adjunct for indirect bonding. *J. Contemp. Dent. Pract.* 22 (8), 964–968.
- Lo Giudice, A., Fastuca, R., Portelli, M., Militi, A., Bellocchio, M., Spinuzza, P., Briguglio, F., Caprioglio, A., Nucera, R., 2017. Effects of rapid vs. slow maxillary expansion on nasal cavity dimensions in growing subjects: a methodological and reproducibility study. *Eur. J. Paediatr. Dent.* 18, 299–304.
- Lo Giudice, G., Lipari, F., Lizio, A., Cervino, G., Ciccù, M., 2012. Tooth fragment reattachment technique on a pluri traumatized tooth. *J. Conservat. Dentistry* 15 (1), 80–83.
- Militi, A., Ciccù, M., Sambataro, S., et al., 2020. Dental occlusion and sport performance. *Minerva Stomatol.*
- Militi, D., Militi, A., Cutrupi, M.C., Portelli, M., Rigoli, L., Matarese, G., Salpietro, D.C., 2011. Genetic basis of non syndromic hypodontia: A DNA investigation performed on three couples of monozygotic twins about PAX9 mutation. *Eur. J. Paediatr. Dent.* 12, 21–24.
- Nawrocka, A., Lukomska-Szymanska, M., 2020. The indirect bonding technique in orthodontics—a narrative literature. *Rev. Mater.* 13 (4), 986.
- Nichols, D.A., Gardner, G., Carballeyra, A.D., 2013. Reproducibility of bracket positioning in the indirect bonding technique. *Am. J. Orthod. Dentofac. Orthop.* 144 (5), 770–776.
- Nucera, R., Bellocchio, A.M., Oteri, G., Farah, A.J., Leonardi, R., Cordasco, G., Portelli, M., 2019. Bone and cortical bone characteristics of mandibular retromolar trigone and anterior ramus region for miniscrew insertion in adults Bone and cortical bone characteristics of mandibular retromolar trigone and anterior ramus region for miniscrew insertion in adults. *Am. J. Orthod. Dent. Fac. Orthop.* 155 (3), 330–338.
- Portelli, M., Matarese, G., Militi, A., Nucera, R., Triolo, G., Cordasco, G., 2009. Myotonic dystrophy and craniofacial morphology: clinical and instrumental study. *Eur. J. Paediatr. Dent.* 10, 19–22.
- Portelli, M., Gatto, E., Matarese, G., Militi, A., Catalfamo, L., Gherlone, E., Lucchese, A., 2015. Unilateral condylar hyperplasia: diagnosis, clinical aspects and operative treatment. A case report. *Eur. J. Paediatr. Dent.* 16, 99–102.
- Portelli, M., Militi, A., Nucera, R., Ciccù, M., Gherlone, E., Lucchese, A., 2016. Orthodontic management of missing lateral incisor by miniscrew-anchored device. *Minerva Stomatol.* 65, 403–4111.
- Portelli, M., Militi, A., Lo Giudice, A., Lo Giudice, R., Fastuca, R., Ielo, I., Mongelli, V., Lo Giudice, G., Lucchese, A., Nucera, R., 2018. Standard and Low-Dose cone beam computer tomography protocol for orthognatodonic diagnosis: A comparative evaluation. *J. Biol. Regul. Homeost. Agents* 32, 59–66.
- Portelli, M., Nucera, R., Fastuca, R., Ciccù, M., Lo Giudice, A., Militi, A., 2019. Use of 3D imaging for treatment planning in cases of impacted canines. *Open Dent. J.* 13, 137–142.
- Rosti, F., Sfondrini, M.F., Bressani, D., Consuelo Vitale, M., Gandini, P., Scribante, A., 2019. Digital Workflow for Indirect Bonding with 2D Lingual Brackets: A Case Report and Procedure Description Case Reports in Dentistry.

- Sabbagh, H., Khazaei, Y., Baumert, U., Hoffmann, L., Wichelhaus, A., Janjic, R.M., 2022. Bracket transfer accuracy with the indirect bonding technique—a systematic review and meta-analysis. *J. Clin. Med.* 11 (9), 2568.
- Sambataro, S., Bocchieri, S., Bafumi, L., Fiorillo, L., Cervino, G., Cicciù, M., 2019. Elastics selector gauge as orthodontics device applied to inter-maxillary traction during malocclusion correction. *J. Funct. Morphol. Kinesiol.* 4 (3), 63.
- Schmid, J., Brenner, D., Recheis, W., Hofer-Picout, P., Brenner, M., Crismani, A., 2018. Transfer accuracy of two indirect bonding techniques—an in vitro study with 3D scanned models. *Eur. J. Orthod.* 40 (5), 549–555.
- Silverman, E., Cohen, M., Gianelly, A.A., Dietz, V.S., 1972. A universal direct bonding system for both metal and plastic brackets. *Am. J. Orthod.* 62, 236–244.
- Sortino, F., Cicciù, M., 2011. Strategies used to inhibit postoperative swelling following removal of impacted lower third molar. *Dental Res. J.* 8 (4), 162–171.
- Troiano, G., Zhurakivska, K., Muzio, L.L., Laino, L., Cicciù, M., Russo, L.L., 2018. Combination of bone graft and resorbable membrane for alveolar ridge preservation: a systematic review, meta-analysis, and trial sequential analysis. *J. Periodontol.* 89 (1), 46–57.
- Vitale, C., Militi, A., Portelli, M., Cordasco, G., Matarese, G., 2009. Maxillary Canine-First Premolar transposition in the permanent dentition. *J. Clin. Orthod.* 43, 517–524.
- Wang, M., Shi, X., Cheng, W.-P., Ma, F.-H., Cheng, S.-M., Kan, X., 2022. Clinical study on efficiency of using traditional direct bonding or orthoguide computer-aided indirect bonding in orthodontic patients. *Dis. Markers* 29 (2022), 9965190.
- Weltman, B., Vig, K.W.L., Fields, H.W., Shanker, S., Kaizar, E.E., 2010. Root resorption associated with orthodontic tooth movement: a systematic review. *Am. J. Orthod. Dentofac. Orthop.* 137, 462–476.
- Xue, C., Xu, H., Guo, Y., Xu, L., Dhami, Y., Wang, H., Liu, Z., Ma, J., Bai, D., 2020. Accurate bracket placement using a computer-aided design and computer-aided manufacturing-guided bonding device: an in vivo study. *Am. J. Orthod. Dentofac. Orthop.* 157 (2), 269–277.