

Electronic Supplementary Information (ESI)

Nanospheres based on PLGA/Amphiphilic Cyclodextrin Assemblies as Potential Enhancers of Methylene Blue Neuroprotective Effect

Carmela Cannavà,^a Rosanna Stancanelli,^b Maria Rita Marabeti,^c Valentina Venuti,^d Caterina Cascio,^c Patrizia Guarneri,^c Corrado Bongiorno,^e Giuseppe Sortino,^f Domenico Majolino,^d Antonino Mazzaglia,^{f*} Silvana Tommasini,^b Cinzia Anna Ventura^{b*}

^aDipartimento di Patologia Umana dell'adulto e dell'età evolutiva "Gaetano Barresi", Università di Messina, Via Consolare Valeria, 1, Policlinico Universitario, Pad.H, I-98125 - Messina, Italy.

^b Dipartimento di Scienze Chimiche, Farmaceutiche, Biologiche ed Ambientali, Università di Messina, V.le Annunziata, I-98168 Messina, Italy.

^c CNR-IBIM Istituto di Biomedicina e Immunologia Molecolare, Via U. La Malfa, 153, I-90146 Palermo, Italy.

^d Dipartimento di Scienze Matematiche e Informatiche, Scienze Fisiche e Scienze della Terra, Viale F. Stagno D'Alcontres 31, I-98166 Messina, Italy.

^e CNR-IMM Istituto di Microelettronica e Microsistemi, Stradale Primosole 50, I-95121 Catania, Italy

^f CNR-ISMN Istituto per lo studio dei Materiali Nanostrutturati Dipartimento di Scienze Chimiche, Farmaceutiche, Biologiche ed Ambientali Viale F. Stagno D'Alcontres 31, I-98166, Messina, Italy

Email: Antonino Mazzaglia - antonino.mazzaglia@ismn.cnr.it; Cinzia Ventura: caventura@unime.it

* Corresponding author

CONTENTS

STEM of SC6OH/MB nanoaggregates (Fig.S1)	ESI-2
FTIR-ATR spectrum of MB, PLGA and SC6OH (Fig S2)	ESI-2
Effects of free MB and MB loaded PLGA/SC6OH₄₀ NPs on the cell viability (Fig. S3)	ESI-3
Effects of free MB and MB loaded PLGA/SC6OH₄₀ NPs on the cell viability (Fig. S4) of RA-differentiated SH-SY5Y cells	ESI-3

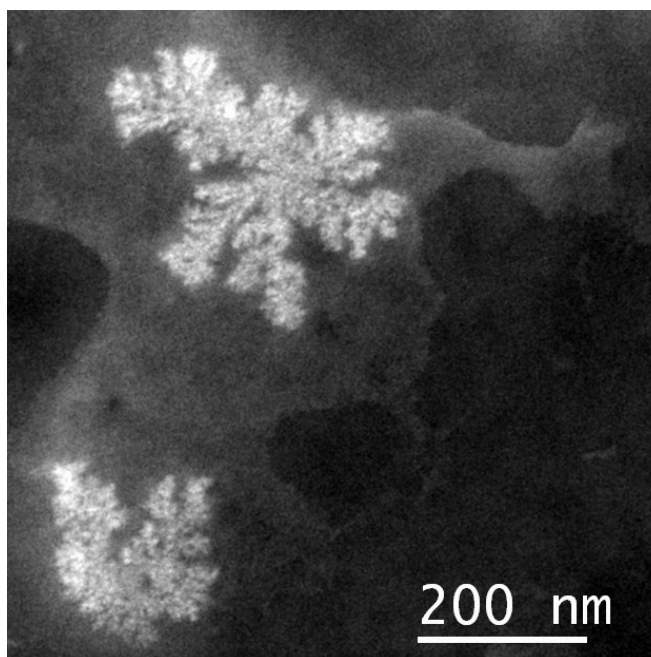


Fig. S1. Representative STEM picture of SC6OH/MB nanoaggregates.

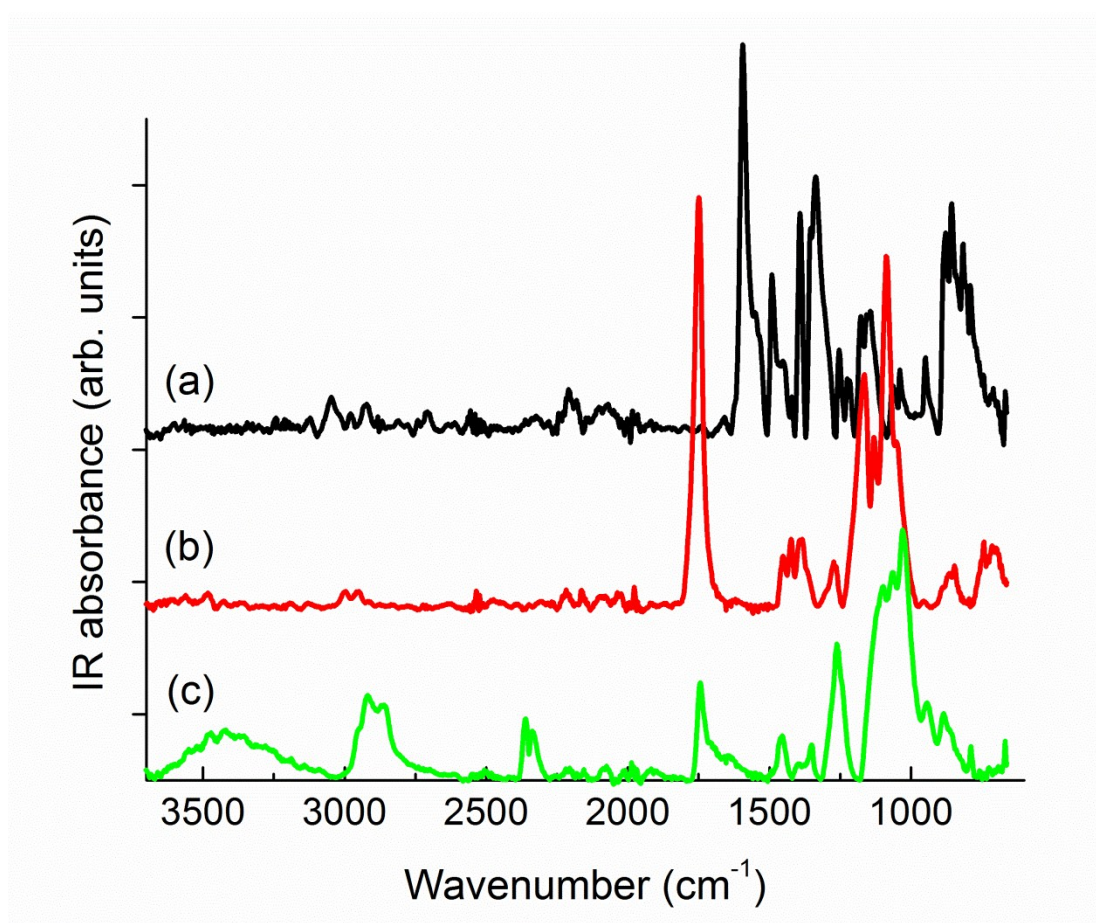


Fig. S2. Experimental FTIR-ATR spectrum of MB (a), PLGA (b) and SC6OH (c).

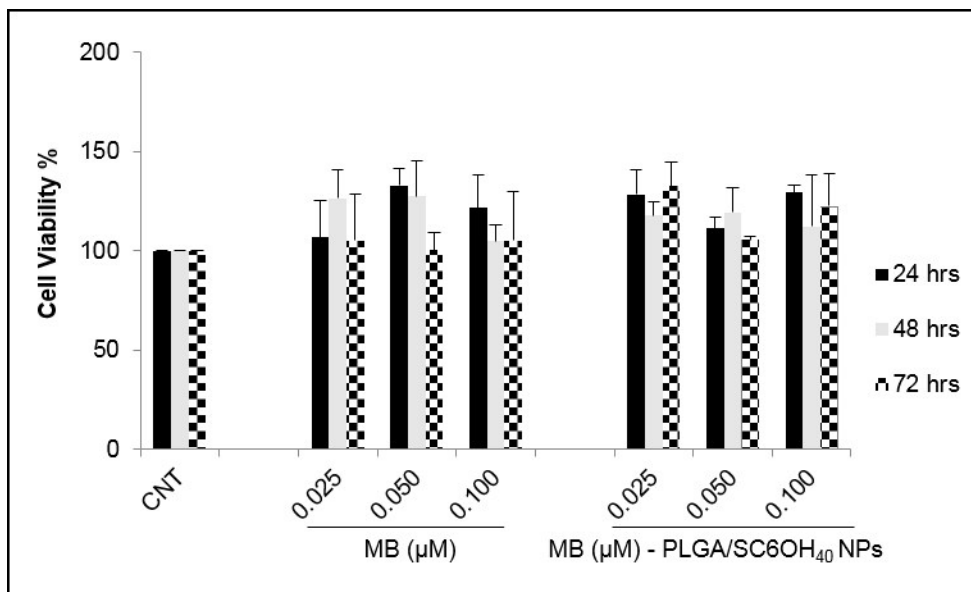


Fig. S3. Effects of free MB and MB loaded PLGA/SC6OH₄₀ NPs on the cell viability after 24-, 48- and 72-hour of treatment; data presented are the mean \pm SD of three independent experiments performed in triplicate.

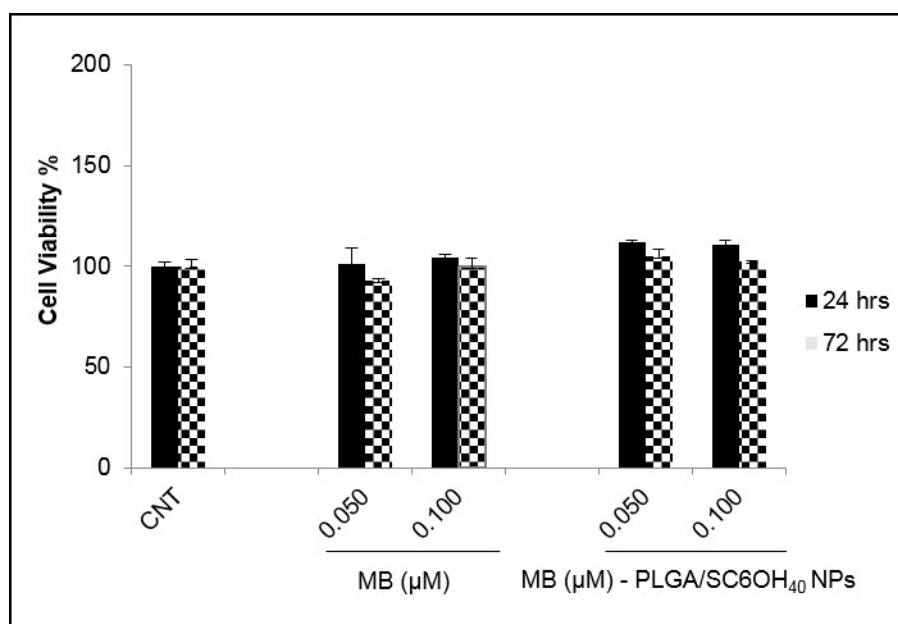


Fig. S4. Effects of free MB and MB loaded PLGA/SC6OH₄₀ NPs on the cell viability of RA-differentiated SH-SY5Y cells after 24- and 72-hour of treatment; data presented are the mean \pm SD of three independent experiments performed in quadruplicate