

Ultrasonography Tight Control and Monitoring in Crohn's Disease During Different Biological Therapies: A Multicenter Study



Emma Calabrese,^{*} Antonio Rispo,[‡] Francesca Zorzi,^{*} Elena De Cristofaro,^{*} Anna Testa,[‡] Giuseppe Costantino,[§] Anna Viola,[§] Cristina Bezzio,^{||} Chiara Ricci,^{||} Simonetta Prencipe,[#] Chiara Racchini,^{**} Gianpiero Stefanelli,^{‡‡} Mariangela Allocca,^{§§} Salvatore Scotto di Santolo,^{||||} Mauro Valeriano D'Auria,^{|||} Paola Balestrieri,^{##} Angelo Ricchiuti,^{***} Maria Cappello,^{‡‡‡} Flaminia Cavallaro,^{§§§} Alessia Dalila Guarino,[‡] Giovanni Maconi,^{|||||} Alessandra Spagnoli,^{|||} Giovanni Monteleone,^{*} and Fabiana Castiglione[‡]

^{*}Gastroenterology Unit, Department of Systems Medicine, University of Rome Tor Vergata, Rome; [‡]Gastroenterology, Department of Clinical Medicine and Surgery, Federico II, School of Medicine, Naples; [§]Clinical Unit for Chronic Bowel Disorders, Department of Clinical and Experimental Medicine, University of Messina, Messina; ^{||}Gastroenterology Unit, ASST Rhodense, Rho Hospital, Rho; ^{|||}Gastroenterology Unit, University and Spedali Civili di Brescia, Brescia; [#]Gastroenterology Unit, PO Barletta; ^{**}Santa Maria delle Croci Hospital, Ravenna; ^{‡‡}Department of Life, Health and Environmental Sciences, Gastroenterology Unit, University of L'Aquila, L'Aquila; ^{§§}Humanitas Clinical and Research Center, Humanitas University, Department of Biomedical Sciences, Milan; ^{||||}PSI Napoli Est ASL NA1 UO Gastroenterologia, Naples; ^{|||}Gastroenterology Unit "Umberto I" Hospital, Nocera Inferiore; ^{##}Unit of Digestive Disease, Campus Bio Medico University of Rome, Rome; ^{***}Gastroenterology Unit, Department of Translational Research and New Technologies in Medicine and Surgery, Cisanello University Hospital of Pisa, Pisa; ^{‡‡‡}Gastroenterology and Hepatology Unit, AOU Policlinico "P. Giaccone", Palermo; ^{§§§}Gastroenterology and Digestive Endoscopy, IRCCS Policlinico San Donato, San Donato Milanese, Milano; ^{|||||}Gastroenterology Unit, Department of Biomedical and Clinical Sciences, FBF-Sacco University Hospital, Milan; and ^{|||}Department of Public Health and Infectious Diseases, Sapienza, University of Rome, Rome

BACKGROUND & AIMS: Bowel ultrasonography (BUS) is a noninvasive tool for evaluating bowel activity in Crohn's disease (CD) patients. Aim of our multicenter study was to assess whether BUS helps to monitor intestinal activity improvement/resolution following different biological therapies.

METHODS: Adult CD patients were prospectively enrolled at 16 sites in Italy. Changes in BUS parameters [i.e. bowel wall thickening (BWT), lesion length, echo pattern, blood flow changes and transmural healing (TH: normalization of all BUS parameters)] were analyzed at baseline and after 3, 6 and 12 months of different biological therapies.

RESULTS: One hundred eighty-eight out of 201 CD patients were enrolled and analyzed (116 males [62%]; median age 36 years). Fifty-five percent of patients were treated with adalimumab, 16% with infliximab, 13% with vedolizumab and 16% with ustekinumab. TH rates at 12 months were 27.5% with an NNT of 3.6. TH at 12 months after adalimumab was 26.8%, 37% after infliximab, 27.2% after vedolizumab and 20% after ustekinumab. Mean BWT improvement from baseline was statistically significant at 3 and 12 months ($P < .0001$). Median Harvey-Bradshaw index, C-reactive protein and fecal calprotectin decreased after 12 months from baseline ($P < .0001$). Logistic regression analysis showed colonic lesion was associated with a higher risk of TH at 3 months and a greater BWT at baseline was associated with a lower risk of TH at 3 months [$P = .03$ (OR 0.70, 95% CI 0.50-0.97)] and 12 months [$P = .01$ (OR 0.58, 95% CI 0.38-0.89)]. At 3 months therapy optimization during the study was the only independent factor associated with a higher risk of no ultrasonographic response [$P = .02$ (OR 3.34, 95% CI 1.18-9.47)] and at 12 months disease duration [$P = .02$ (OR 3.03, 95% CI 1.15-7.94)].

CONCLUSIONS: Data indicate that BUS is useful to monitor biologics-induced bowel activity improvement/resolution in CD.

Keywords: Crohn's Disease; Imaging; Inflammation; Bowel Ultrasonography; Biologicals; Monitoring.

Abbreviations used in this paper: BUS, bowel ultrasonography; BWT, bowel wall thickening; CD, Crohn's disease; CI, confidence interval; CRP, C-reactive protein; FCal, fecal calprotectin; HBI, Harvey-Bradshaw Index; HR, hazard ratio; iv, intravenous; NNT, number needed to treat; OR, odds ratio; sc, subcutaneous; TH, transmural healing; TNF, tumor necrosis factor.

© 2022 by the AGA Institute. Published by Elsevier Inc. This is an open access article under the CC BY-NC-ND license (<http://creativecommons.org/licenses/by-nc-nd/4.0/>).

1542-3565/\$36.00

<https://doi.org/10.1016/j.cgh.2021.03.030>

Evidence accumulated over the past decade indicates that bowel ultrasonography (BUS) is an accurate diagnostic tool not only in the evaluation of disease activity and complications but also for monitoring disease progression and assessment of therapeutic response in Crohn's disease (CD).¹ CD is a transmural disease in which progressive inflammation leads to intestinal wall thickening, fibrosis, and penetrating complications. Therefore, inflammatory burden and disease prognosis may not be adequately reflected by only assessing the mucosal layer. The increasing use of BUS in CD has introduced new challenges, including how to interpret lesion changes mediated by anti-inflammatory therapies (corticosteroids, immunosuppressants, and biological drugs) with different ultrasonographic techniques and how to define remission after treatments.^{2,3} Some studies report data regarding the potential role of transmural healing (TH) as a long-term prognostic factor. Castiglione et al⁴ showed that normalization of the parietal thickening assessed by BUS was associated with a higher rate of steroid-free clinical remission and a lower rate of relapse at 1 year compared with mucosal healing and no healing. Zorzi et al⁵ demonstrated that ultrasonographic response is noted in more than 50% of patients after 1 year of anti-tumor necrosis factor (TNF) therapy, and this response is associated with significantly reduced long-term risk of corticosteroid need, hospitalizations, and/or surgeries among patients with CD. Monitoring CD patients with an ultrasonographic tight control during biological therapies could be a valuable method to assess lesion remodeling or healing and a decision instrument to continue or change therapies. The development of a standardized BUS imaging interpretation and reporting pattern among sonographers will improve comparability of BUS results among various centers globally, with subsequent improvement in the quality of multicenter BUS studies and training with wider dissemination of this technique.⁶ The aim of our multicenter study was to assess changes in BUS parameters including TH induced by different biological therapies.

Methods

Patients were prospectively enrolled at 16 sites in Italy between February 2018 and February 2019 and followed for a year. Patients were eligible if they were ≥ 18 years with a proven diagnosis of ileal and/or ileocolonic CD and eligible for biological therapies.⁷ Diagnosis, CD location, and patients' assessment were made according to generally accepted recommendations.¹ Patients were followed for 12 months, with visits and BUS at baseline, 3 months, 6 months, and 12 months. At each visit, the Harvey-Bradshaw Index (HBI) was determined, and blood and fecal biomarkers (C-reactive protein [CRP] and fecal calprotectin [FCal]) were prospectively collected and recorded. Patients with HBI score less than

What You Need to Know

Background

The increasing use of bowel ultrasonography in Crohn's disease has introduced new challenges, including how to interpret lesion changes induced by anti-inflammatory therapies (corticosteroids, immunosuppressants, and biological drugs) with different ultrasonographic techniques and how to define remission after treatments.

Findings

This study demonstrates that even after few months of treatment with biologics, bowel ultrasonography is useful to individuate transmural healing and significant improvements of the lesions.

Implications for patient care

These results highlight the importance of monitoring biologics-induced bowel lesion improvement/resolution in Crohn's disease using bowel ultrasonography.

5 were considered to be in remission. Exclusion criteria included pregnancy, ileal or colonic stoma, and obesity (body mass index >30 kg/m²). Patients with CD lesions restricted to the gastroduodenal or anorectal areas and patients with abdominal abscess were also excluded. Written informed consent was obtained from all study participants. The study was approved by the local ethics committee of the study coordinator center (number 174/17).

Biological Treatments

In this prospective, multicenter study patients received standard of care according to the European Crohn's and Colitis Organization guidelines for therapies.⁷ Induction therapy consisted of 5 mg/kg infliximab (intravenous [iv]) at weeks 0, 2, and 6 or 160 mg of adalimumab (subcutaneous [sc]) at week 0 and 80 mg at week 2 or 300 mg of vedolizumab (iv) at weeks 0, 2 and 6 or 130 mg of ustekinumab (adapted according to patient weight: ≤ 55 kg 260 mg, >55 to ≤ 85 kg 390 mg, >85 kg 520 mg) (iv) at week 0. Maintenance therapy consisted of 5 mg/kg infliximab every 8 weeks or 40 mg of adalimumab every 2 weeks or 300 mg of vedolizumab (iv) every 8 weeks or 90 mg of ustekinumab (sc) every 8 weeks, respectively. Treatment was intensified reactively when loss of clinical response was documented in association with objective evidence of active disease assessed by increased FCal or CRP and at BUS. Intensification was considered 10 mg/kg (iv) every 8 weeks for infliximab, 40 mg (sc) every week for adalimumab, 300 mg (iv) every 4 weeks for vedolizumab, and 90 mg of ustekinumab (sc) every 4 weeks for ustekinumab.

Bowel Ultrasonography

BUS was performed at baseline and 3, 6, and 12 months after therapies. Patients were examined in the fasting state. The US examinations were performed by the gastroenterologists managing and treating the patient with different US devices using convex probe (1–8 MHz) and a high-frequency, linear-array transducer (3–11 MHz). Examiners were all experienced bowel sonographers and were not blinded to clinical/biochemical parameters of the patient. Disease site (on the basis of bowel wall thickening [BWT] >3 mm for ileum and >4 mm for colon), extent of lesions, echo pattern (preserved and not preserved), presence of lymph nodes and/or fibrofatty proliferation, presence of complications (stenosis, prestenotic dilation, abscess, fissures [lesion originating from deep ulcerations of the intestinal wall visualized as subtle hypoechoic irregularities of the bowel surface], or fistulas) were evaluated using BUS as previously described.^{8,9} As a semi-quantitative method for determining disease activity, the vascularity within the affected bowel wall areas was assessed by duplex US examination using the Limberg score.¹⁰ The most affected bowel segment at baseline was used for all BUS parameters. The cutoff value of BWT and all parameters were previously defined in 2 meetings. The first one was conducted for standardization of all bowel parameters and to reach a consensus about lesions and the second one to share difficulties during the enrollment. Representative examples of the lesions were analyzed and discussed by participants following European Federation of Societies for Ultrasound in Medicine and Biology guidelines.⁹ In all recruited patients, a Case Report Form was generated for BUS parameters by each operator.

BUS changes were categorized as the following:

- (1) Improved lesions defined as (a) those with improvement (>1 mm) or normalization of BWT (normal value for small bowel <3 mm, for large bowel <4 mm), (2) decreased length of disease, (3) Limberg score improvement, and (4) no worsening of the other disease parameters of active inflammation or fistulizing disease. All patients with improved lesions had at least 2 improved ultrasonographic parameters. TH was defined as normalization of all parameters.
- (2) Worsened lesions defined as those with a deterioration of measurements of all parameters of active inflammation.
- (3) Unchanged lesions defined as those with unchanged inflammatory parameters.

Statistical Analysis

The sample size was calculated on the basis of per-patient analysis for the association of baseline patient/

disease characteristics with BUS response status. For a characteristic with 50% prevalence, with a power of 80%, an alpha of 0.05, to detect a relative risk of 2, 150 patients were needed. Demographic data were expressed as median and range. Differences between disease characteristics in different treatment groups were analyzed by Kruskal-Wallis test corrected for multiple comparison using Dunn's correction. Changes in BUS parameters after 3, 6, and 12 months were analyzed using Wilcoxon test and paired *t* test; difference between proportion and number needed to treat (NNT) was tested by χ^2 test.

Logistic regression analyses were performed to examine the relationship between the outcomes (TH and unchanged/worsened lesions) at 3 and 12 months as dependent variables and possible predictors as independent variables. The following variables were included in the univariable analysis: gender, smoking habits, age at CD diagnosis, disease location, behavior, disease site evaluated at US (ileal/colonic site), previous surgery, previous anti-TNF exposure, disease duration, indication to therapies, type of therapies, optimization, combination therapy, concomitant therapies with steroids, positive FCal, positive CRP, HBI, all BUS parameters. The multivariable analysis adjusted for disease duration, disease location, prior anti-TNF exposure, and types of therapies was performed by using a multiple logistic regression model. A *P* value <.05 was considered statistically significant. In this multivariate model we included both factors/variables that had statistical weight and highlighted disease burden. The cumulative probabilities of TH and unchanged/worsened lesions for each treatment were calculated by using the log-rank (Mantel-Cox) test and hazard ratio (HR) (Mantel-Haenszel) with 95% confidence interval (CI).

Results

Two hundred one CD patients were eligible. Thirteen patients (6%) discontinued the trial prematurely (Supplementary Figure 1). Clinical characteristics of the 188 patients analyzed are reported in Table 1. Fifty-five percent of patients were treated with adalimumab, 16% with infliximab, 13% with vedolizumab, and 16% with ustekinumab. During the 12-month study, 13% of patients needed biological therapy optimization based on clinical, biochemical, and/or sonographic evaluations. CD duration (*P* = .01), prior surgery (*P* = .002), prior anti-TNF therapies (*P* < .0001), and HBI at enrollment (*P* = .004) were statistically different in the 4 groups of treatment (Supplementary Table 1).

Ultrasonographic Response

All BUS parameters at baseline visit (V0) and at 3 (V1), 6 (V2), and 12 months (V3) were recorded and compared (Table 2). Signs of active inflammation at ileal

Table 1. Characteristics of the Study Population

	n = 188
Sex, n (%)	
Male	116 (62)
Smoking habits, n (%)	
Yes	71 (38)
CD duration, mo	
Median (range)	72 (3–636)
Age at diagnosis, n (%)	
A1	23 (12)
A2	132 (70)
A3	33 (18)
CD behavior, n (%)	
B1	80 (43)
B2	76 (40)
B3	32 (17)
CD location, n (%)	
L1	89 (47.4)
L2	10 (5.3)
L3	87 (46.3)
L1 + L4	2 (1)
Perianal disease, n (%)	
Yes	20 (11)
Prior CD-related surgery, n (%)	
Yes	85 (45)
Prior anti-TNFs, n (%)	
Yes	68 (36)
Indication to biological therapy at enrollment, n (%)	
Steroid dependent	26 (14)
Active disease	162 (86)
Harvey-Bradshaw index at enrollment	
Median (range)	7 (0–18)
Biological therapy started, n (%)	
Infliximab	31 (16)
Adalimumab	103 (55)
Ustekinumab	30 (16)
Vedolizumab	24 (13)
Concomitant medication at first dose of biological therapy, n (%)	
None	93 (49.5)
Thiopurines or methotrexate	14 (7.5)
Glucocorticoid	36 (19)
Aminosalicylate drug	45 (24)
Combo therapy, n (%)	14 (7)

CD, Crohn's disease; TNF, tumor necrosis factor.

level in terms of BWT, lesion length, preserved echo pattern, blood flow according to Limberg score, fissures, lymph nodes, and fibrofatty proliferation had significantly improved at each time point. The same behavior was observed at colonic level except for the echo stratification and presence of fissures (Table 2). No statistical differences for the presence of complications (stenosis, fistulas) were observed.

After 3 months of treatment, we observed that a significant proportion of patients experienced complete

healing of lesions compared with V0 ($P < .0001$) (Table 3). At V1, TH rate was 16.4% with NNT of 6.1 (14.5% and 26.6% in patients with ileal and colonic disease, respectively) (Figure 1A). A significant lesion improvement rate was observed in 36.7% of patients with NNT of 2.7 (40.5% and 16.6% in patients with ileal and colonic disease, respectively). Eighty-eight of 188 patients (46.8%) had unchanged/worsened lesions (Table 3) (Figure 1B).

After 6 months of treatment we observed a significant proportion of patients presented TH compared with baseline ($P < .0001$) (Table 3). At V2, TH rate was 24.5% with NNT of 4.1 (21.9% and 40% in patients with ileal disease and colonic disease, respectively). A significant lesion improvement rate was observed in 38% of patients with NNT of 2.6 (41% and 20% in patients with ileal and colonic disease, respectively). Sixty-four of 171 patients (37.4%) had no lesion changes or worsened damage (Table 3).

At 12 months of treatment we observed a significant proportion of patients experienced complete healing of lesions compared with V0 ($P < .0001$) (Table 3). At V3, TH rate was 27.6% with NNT of 3.6 (24% and 47.8% in patients with ileal and colonic disease, respectively). A significant lesion improvement rate was observed in 36% of patients with NNT of 2.9 (40.6% and 21.7% in patients with ileal and colonic disease, respectively). Fifty-four of 156 patients (34.6%) had no changes or worsened damage (Table 3).

When considering different drugs, at 12 months TH was observed in 26.5% of patients treated with adalimumab, in 37% with infliximab, in 27.2% with vedolizumab, and in 20% with ustekinumab. No statistically significant difference in speed of effectiveness of TH among therapies was observed (Figure 2A), but when considering the lesion improvement, patients treated with ustekinumab had a lower rate than patients treated with infliximab (HR = 0.4; 95% CI, 0.2–0.9; $P = .037$) (Figure 2B). Furthermore, patients treated with ustekinumab showed higher rates of unchanged/worsened lesions than patients treated with anti-TNFs (adalimumab vs ustekinumab: HR = 2.1; 95% CI, 1.12–3.9; $P = .02$; infliximab vs ustekinumab: HR = 2.7; 95% CI, 1.9–6.4; $P = .017$) (Figure 2C).

At 3, 6, and 12 months after infliximab, patients experienced TH in 13%, 22%, and 37%, respectively. Fifty-one percent, 52%, and 40% of patients showed improved lesions, whereas 36%, 26%, and 23% of patients had unchanged/worsened lesions.

At 3, 6, and 12 months after adalimumab, patients experienced TH in 17.5%, 29%, and 26.5%, respectively. Thirty-seven percent, 38%, and 40% of patients showed improved lesions, whereas 46% and 33% (both 6 and 12 months) of patients had unchanged/worsened lesions.

At 3, 6, and 12 months after vedolizumab, patients experienced TH in 12.5%, 23%, and 27%, respectively. Thirty-seven percent, 27%, and 32% of patients showed improved lesions, whereas 50% (both for 3 and 6

Table 2. BUS Parameters at Baseline and at 3, 6, and 12 Months

BUS parameters	V0 Baseline n = 188	V1 3 mo n = 188	V2 6 mo n = 171	V3 12 mo n = 156	P value V1 vs V0 n=188	P value V2 vs V0 n=171	P value V3 vs V0 n=156
BWT							
Median, range (mm)							
Ileal disease	6 (3.4–11.5)	5.5 (3–10)	5 (3–10)	5 (3–9)	<.0001	<.0001	<.0001
Colonic disease	6.35 (4.3–9)	5.5 (4–8)	4.9 (4–8)	4 (4–8)	.07	.01	.0004
Lesion length							
Median, range (cm)							
Ileal disease	15 (4–60)	10 (0–60)	10 (0–60)	10 (0–50)	.009	.0008	<.0001
Colonic disease	40 (20–100)	30 (0–100)	20 (0–100)	10 (0–100)	.98	.0015	.004
Echo pattern							
Ileal disease							
• Preserved	105	122	118	110	.033	.0046	.0017
• Not preserved	53	36	28	23			
Colonic disease							
• Preserved	23	24	19	19	.7	.7	.7
• Not preserved	7	6	6	4			
Blood flow							
Limberg score							
Ileal disease							
• 1	33	69	79	81	.0001	.0001	<.0001
• 2	59	49	42	27			
• 3	39	31	11	18			
• 4	27	9	14	7			
Colonic disease							
• 1	8	16	15	14	.0056	.0017	.015
• 2	11	8	7	6			
• 3	4	4	3	3			
• 4	7	2	0	0			
Stenosis with dilatation							
Ileal disease	13	11	13	12	.6	.8	.2
Colonic disease	0	0	0	1			
Fissures							
Ileal disease	16	11	11	4	.3	.5	.012
Colonic disease	1	1	1	0			
Fistula							
Ileal disease	2	2	5	4	>.99	.2	.3
Colonic disease	0	0	0	0			
Abscess							
Ileal disease	0	0	1	0	>.99	.3	>.99
Colonic disease	0	0	0	0			
Lymph node							
Ileal disease	80	58	43	33	.009	.0005	<.0001
Colonic disease	11	8	9	5			
Fibrofatty proliferation							
Ileal disease	94	64	57	44	.0002	<.0001	<.0001
Colonic disease	15	9	6	6			

BUS, bowel ultrasonography; BWT, bowel wall thickening.

months) and 41% of patients had unchanged/worsened lesions.

At 3, 6, and 12 months after ustekinumab, patients experienced TH in 20%, 14%, and 20%,

respectively. Twenty percent, 31%, and 32% of patients showed improved lesions, whereas 60%, 55%, and 48% of patients had unchanged/worsened lesions (Figure 2D).

Table 3. Lesion Changes in Terms of TH, Improved Lesions, or Unchanged/Worsened Lesions, Clinical Activity, and Biomarkers at Different Time From Enrollment

	V0 Baseline n = 188	V1 3 mo n = 188	V2 6 mo n = 171	V3 12 mo n = 156	P value V1 vs V0 n = 188	P value V2 vs V0 n = 171	P value V3 vs V0 n = 156
Patients with TH							
Total patients	—	31/188	42/171	43/156	<.0001	<.0001	<.0001
Ileal disease	—	23/158	32/146	32/133	NNT 6.1 (4.6–9.8)	NNT 4.1 (3.2–5.8)	NNT 3.6 (2.9–5.1)
Colonic disease	—	8/30	10/25	11/23			
Patients with improved lesions							
Total patients	—	69/188	65/171	56/156	<.0001	<.0001	<.0001
Ileal disease	—	64/158	60/146	54/133	NNT 2.7 (2.3–3.4)	NNT 2.6 (2.2–3.3)	NNT 2.9 (2.4–3.8)
Colonic disease	—	5/30	5/25	5/23			
Patients with unchanged or worsened lesions							
Total patients	—	88/188	64/171	54/156			
Ileal disease	—	71/158	54/146	48/133	<.0001	<.0001	<.0001
Colonic disease	—	17/30	10/25	6/23			
HBI							
Remission	16/188	104/188	115/171	116/156			
Active disease	172/188	84/188	56/171	40/156	<.0001	<.0001	<.0001
Fecal calprotectin							
Negative	74/170	106/152	108/150	101/130			
Positive	96/170	46/152	42/150	29/130	<.0001	<.0001	<.0001
C-reactive protein							
Negative	83/183	121/181	102/159	99/146			
Positive	100/183	60/181	57/159	47/146	<.0001	.0005	<.0001

HBI, Harvey-Bradshaw Index; NNT, number needed to treat; TH, transmural healing.

Clinical Response

After 3, 6, and 12 months a significant proportion of patients achieved clinical remission and normalization of CRP and FCal compared with V0 (Table 3). At 12 months, patients in clinical and biochemical remission had a higher rate of TH or improved lesions than unchanged/worsened lesion group (Supplementary Figure 2).

Optimization Treatment Strategy

During the study, 13% of patients (25/188) needed therapy optimization on the basis of clinical, biochemical, and/or sonographic evaluations. At V1, 3 of 5 patients experienced improvement of the lesions after dose escalation. At V2, 2 of 12 improved ultrasonographic lesions, and additional 2 patients achieved TH. At V3, 8 patients received therapy optimization. Overall dose escalation induced lesion improvement in 41% of patients.

Prediction of Risk for Transmural Healing or Unchanged/Worsened Lesions

Logistic regression was performed to examine the relationship between TH or unchanged/worsened lesion

outcomes at 3 and 12 months as dependent variables and possible predictors as independent variables. Univariable analysis showed a greater BWT at baseline was associated with lower risk of TH at 3 months ($P = .018$; odds ratio [OR], 0.69; 95% CI, 0.5–0.94) and 12 months ($P = .006$; OR, 0.65; 95% CI, 0.48–0.89). Colonic lesion was associated with higher risk of TH at 12 months ($P = .02$; OR, 3.14; 95% CI, 1.14–8.65); inversely at 12 months patients treated with ustekinumab were associated with lower risk of TH ($P = .04$; OR, 0.24; 95% CI, 0.06–0.97) (Table 4). At the same level, univariable analysis showed prior surgery was associated with slightly lower risk of unchanged/worsened lesions at 3 months ($P = .011$; OR, 0.45; 95% CI, 0.24–0.84); previous anti-TNF exposure, disease duration, and therapy optimization during the study were associated with higher risk of worsened lesions at 3 months ($P = .048$; OR, 1.93; 95% CI, 1–3.7) ($P = .006$; OR, 2.68; 95% CI, 1.32–5.43) ($P = .011$; OR, 3.63; 95% CI, 1.34–9.81), respectively. At 12 months all these predictors for higher risk of unchanged/worsened lesions were confirmed ($P = .04$; OR, 2.14; 95% CI, 1.02–4.47) ($P = .006$; OR, 3.33; 95% CI, 1.40–7.94) ($P = .02$; OR, 3; 95% CI, 1.16–7.75), respectively) (Table 5).

In the multivariable analysis, colonic lesion was associated with higher risk of TH at 3 months ($P = .03$; OR, 3.18; 95% CI, 1.11–9.10); a greater BWT at baseline

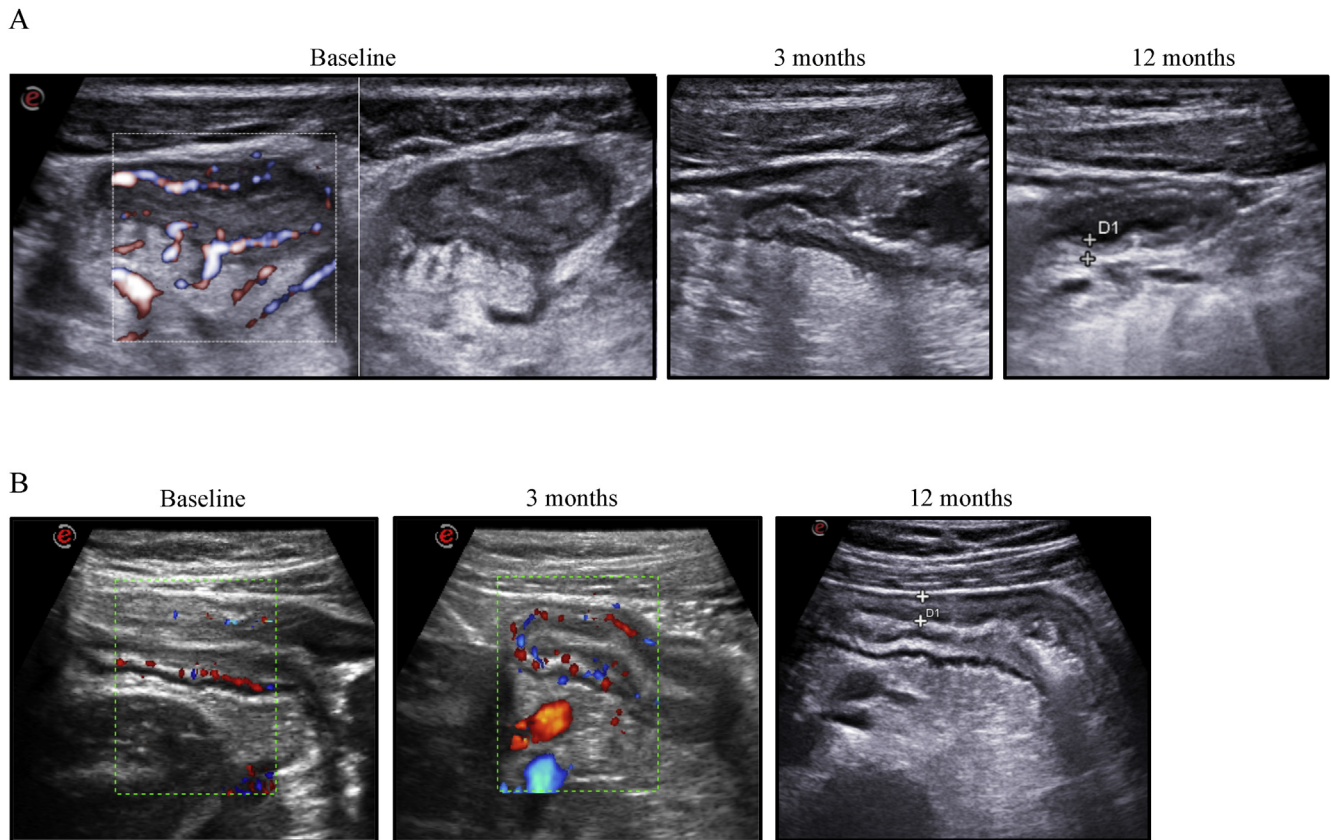


Figure 1. (A) Transmurular healing in terms of BWT, lesion extent, penetrating complications, and vascular signals of the distal ileum of CD patient before and after 3 and 12 months of infliximab. (B) Unchanged lesion in terms of BWT, lumen narrowing, lesion extent, and vascular signals of the distal ileum of CD patient before starting treatment and after 3 and 12 months of adalimumab. BWT, bowel wall thickening; CD, Crohn's disease.

was the only independent factor associated with lower risk of TH at 3 and 12 months ($P = .035$; OR, 0.70; 95% CI, 0.5–0.97) ($P = .011$; OR, 0.58; 95% CI, 0.38–0.89), respectively (Table 4). At 3 months therapy optimization during the study was the only independent factor associated with higher risk of unchanged/worsened lesions ($P = .02$; OR, 3.34; 95% CI, 1.18–9.47). At 12 months the only predictor for higher risk of unchanged/worsened lesions was disease duration ($P = .02$; OR, 3.03; 95% CI, 1.15–7.94) (Table 5).

Discussion

Transmurular inflammation is often associated with structural damage that does not completely resolve after treatment.¹¹ TH, which is defined as healing of the entire thickness of the intestinal wall of all inflamed segments involved,^{2,12} has been proposed as a new treatment target in CD.¹³ Different studies have demonstrated that TH could be a robust but puzzling endpoint that can be achieved in about one-fourth of patients treated with anti-TNF agents.^{2,14,15} Furthermore, Zorzi et al⁵ demonstrated that ultrasonographic response is noted in more than 50% of patients after 1 year of anti-TNF therapy, and this response is associated with significantly reduced

long-term risk of corticosteroid need, hospitalizations, and/or surgeries among patients with CD. The increasing use of BUS in CD has introduced new challenges, including how to define TH, partial ultrasonographic remission, and how to interpret discrepancies between endoscopic healing and persistence of transmural abnormalities in BUS assessments. Residual mural abnormalities, such as wall thickening, or extramural lesions can persist in intestinal segments, and it is crucial to determine whether these lesions represent established persistent activity that can heal with appropriate biological therapies.¹⁶ Furthermore, understanding the baseline features that may predict the persistence of lesions may be helpful in better understanding post-treatment findings.

A large multicenter German study has been conducted to determine the role of BUS for monitoring treatment response. In this trial, CD patients with acute disease received anti-inflammatory treatment. Almost all sonographic parameters determined during BUS showed a highly significant decrease at different sites.³ The development of a common US imaging interpretation pattern among sonographers around the world who are assessing patients with CD may promote this technique as a useful tool in inflammatory bowel disease centers for diagnosing suspected CD, determining the

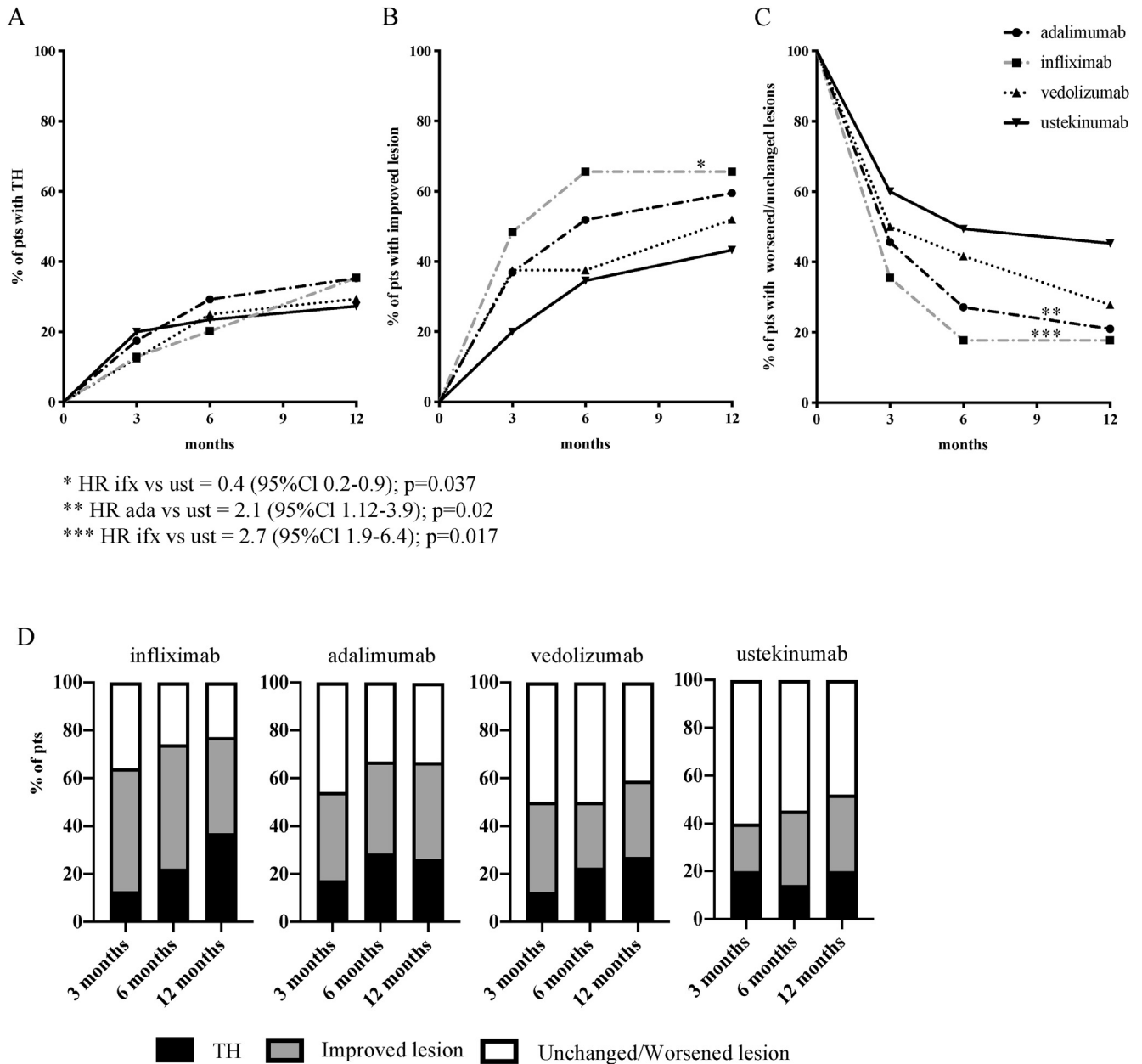


Figure 2. Percentages of patients achieving TH (A), lesion improvement (B), or unchanged/worsened lesions (C) during the study using different biological therapies; (D) rates of TH, improved lesions, and unchanged/worsened lesions among the 4 groups of treatment at 3, 6, and 12 months. ada, adalimumab; CI, confidence interval; HR, hazard ratio; ifx, infliximab; TH, transmural healing; ust, ustekinumab.

extent and severity of mucosal inflammation, evaluating disease activity, monitoring disease course during therapy, and postoperative recurrence. Our multicenter study demonstrated that after 3 months from biological therapies initiation, TH and improved lesions were reached in 53% of patients, after 6 months in 62.5% of patients, and after 1 year in 64% of patients. After 12 months of therapy the average number of patients who need to be treated to have TH is 3.6, and about 48% of patients with colonic lesions experienced normalization of all ultrasonographic parameters. In the multivariable analysis, colonic lesion was associated with higher risk of TH at 3 months, as previously observed.¹⁷ The exact

reason for the different behavior of the ileum versus parts of the colon on biological treatment evaluated by BUS examination remains unclear. The slower normalization of sonographic parameters, such as BWT at the ileum level compared with colon, is in line with our study.³ Structural anatomic characteristics, such as higher distribution of Peyer patches or different bacterial colonization at the terminal ileum, could contribute to these differences in sonographic response to treatment. The main ultrasonographic parameter is pre-treatment mural thickness; the greater the thickness before treatment, the higher the risk of incomplete normalization of the wall after treatment. BUS is not

Table 4. Univariable and Multivariable Analysis Showing Variables Associated With TH at 3 and 12 Months

Predictors	Univariable			Multivariable		
	<i>P</i> value	OR	95% CI	<i>P</i> value	OR	95% CI
TH at 3 mo						
Disease site evaluated at US (ileal disease reference)						
Colonic disease	.05	2.52	0.97–6.53	.027	3.34	1.15–9.72
Prior surgery (no reference)	.51	0.76	0.34–1.71	.5	0.72	0.28–1.85
Prior TNFs (no reference)	.73	0.86	0.36–2.04	.84	0.88	0.25–3.11
Disease duration (\leq 24 months reference)						
>24 mo	.57	0.78	0.33–1.83	.57	0.75	0.27–2.07
Type of biological therapies (IFX reference)						
Adalimumab	.8	1.16	0.35–3.81	.75	1.24	0.33–4.40
Vedolizumab	.52	0.55	0.09–3.37	.65	0.65	0.10–4.32
Ustekinumab	.52	1.58	0.39–6.42	.48	1.79	0.35–9.09
BWT (<i>mm</i>)	.018	0.69	0.5–0.94	.047	0.71	0.51–1
Dose escalation during treatment (no reference)	.12	0.2	0.03–1.53	.16	0.23	0.03–1.87
TH at 12 mo						
Disease site evaluated at US (ileal disease reference)						
Colonic disease	.02	3.14	1.14–8.65	.67	1.38	0.3–6.28
Prior surgery (no reference)	.28	1.52	0.71–3.27	.55	0.73	0.25–2.1
Prior TNFs (no reference)	.57	0.79	0.35–1.78	.85	1.14	0.27–4.82
Disease duration (\leq 24 mo reference)						
>24 mo	.44	0.73	0.33–1.61	.99	1.01	0.32–3.21
Type of biological therapies (IFX reference)						
Adalimumab	.05	0.37	0.14–1.02	.58	0.67	0.17–2.74
Vedolizumab	.13	0.37	0.1–1.38	.41	0.44	0.06–3.22
Ustekinumab	.04	0.24	0.06–0.97	.78	0.77	0.12–5.17
BWT (<i>mm</i>)	.006	0.65	0.48–0.89	.02	0.61	0.40–0.93
Dose escalation during treatment (no reference)	.06	0.24	0.05–1.07	.27	0.31	0.04–2.59

BWT, bowel wall thickening; CI, confidence interval; IFX, infliximab; OR, odds ratio; TH, transmural healing; TNF, tumor necrosis factor; US, ultrasonography.

only helpful in assessing TH but also can be useful in guiding the choice of optimizing therapy. Although at 3 months therapy optimization during the study was the only independent factor associated with higher risk of worsened lesions, overall dose escalation induced lesion improvement in 41% of patients. Twenty-two percent had TH/improved lesions after 3 months of biological therapy but no ultrasonographic improvement or loss of initial ultrasonographic response at 12 months. On the basis of these results, BUS appears to have an indisputable role in the assessment of lesion remodeling during treatment. No statistical differences in terms of improvement/TH for complications were observed at each time point probably because of a reduced number of patients with these features.

No statistically significant difference in speed of effectiveness of TH among therapies was observed. At 12 months patients treated with ustekinumab showed higher rates of unchanged/worsened lesions than patients treated with anti-TNFs. This observation could be sustained by the number of patients among the 4 groups of treatments and by the refractory diseases in patients treated with ustekinumab. In our multicenter study, 36% of patients had prior therapy with anti-TNF agents, and treatment with other class of biological drugs could be the final therapeutic option. Patient profiling and personalized therapy to different stages of inflammation

will probably allow better differentiation of ultrasonographic response to biological drugs. This study allows an evaluation of the achievement of TH with different biological drugs.

Some limitations of this study should be acknowledged. First, we assessed TH after different biological therapies on BUS and did not perform a cross-sectional imaging evaluation of TH or endoscopy. Previous studies have demonstrated that by using BUS, TH was observed in 25% of patients treated with anti-TNFs, whereas by using magnetic resonance enterography, TH was observed in 23% ($\kappa = 0.90$; $P < .01$).¹⁵ Comparison between BUS and endoscopy has already been provided by several previous studies.^{2,15,18} The lack of a reference standard to confirm BUS results is not a limitation of this study because our aim was to assess the changes in ultrasonographic parameters after different therapies in patients with established CD where site and extent of the lesions were well-known.

Another limitation may be the potential interobserver and interequipment variability that has always been raised as an issue when using US examination. Agreement in scoring of individual parameters especially for BWT is particularly relevant in BUS.⁶ However, in our country, the use of BUS is part of standard of care in CD evaluation and is crucial in quickly resolving diagnostic questions and directing physicians

Table 5. Univariable and Multivariable Analysis Showing Variables Associated With Unchanged/Worsened Lesions at 3 and 12 Months

Predictors	Univariable			Multivariable		
	P value	OR	95% CI	P value	OR	95% CI
Unchanged/worsened lesion at 3 mo						
Disease site evaluated at US (ileal disease reference)						
Colonic disease	.006	2.68	1.32–5.43	.28	1.66	0.65–4.23
Prior surgery (no reference)	.011	0.45	0.24–0.84	.07	0.53	0.26–1.08
Prior TNFs (no reference)	.048	1.93	1–3.7	.81	1.11	0.46–2.71
Disease duration (\leq 24 mo reference)						
>24 mo	.006	2.68	1.32–5.43	.10	1.94	0.87–4.29
Type of biological therapies (IFX reference)						
Adalimumab	.25	1.72	0.67–4.37	.11	2.31	0.82–6.5
Vedolizumab	.16	2.34	0.70–7.7	.17	2.48	0.67–9.13
Ustekinumab	.03	3.4	1.07–10.77	.14	2.71	0.72–10.20
BWT (mm)	.55	0.94	0.77–1.16	.54	0.93	0.74–1.18
Dose escalation during treatment (no reference)	.011	3.63	1.34–9.81	.02	3.44	1.21–9.82
Unchanged/worsened lesion at 12 mo						
Disease site evaluated at US (ileal disease reference)						
Colonic disease	.006	3.33	1.40–7.94	.13	0.37	0.10–1.35
Prior surgery (no reference)	.31	0.70	0.35–1.41	.53	1.31	0.56–3.05
Prior TNFs (no reference)	.04	2.14	1.02–4.47	.56	1.37	0.47–3.97
Disease duration (\leq 24 mo reference)						
>24 mo	.006	3.33	1.40–7.94	.022	3.12	1.18–8.3
Type of biological therapies (IFX reference)						
Adalimumab	.25	2	0.61–6.59	.39	1.74	0.48–6.25
Vedolizumab	.08	3.48	0.86–14.11	.10	3.44	0.76–15.56
Ustekinumab	.03	4.25	1.08–16.77	.23	2.61	0.53–12.91
BWT (mm)	.6	0.94	0.73–1.20	.29	0.85	0.63–1.15
Dose escalation during treatment (no reference)	.02	3	1.16–7.75	.053	2.81	0.99–8.02

BWT, bowel wall thickening; CI, confidence interval; IFX, infliximab; OR, odds ratio; TH, transmural healing; TNF, tumor necrosis factor.

to the most appropriate management. In this study BUS was considered part of CD assessment and therapeutic choices and sonographers (gastroenterologists specialized in inflammatory bowel disease) contributed to patient management, just as endoscopists performed the procedures with clinical information. All the gastroenterologists were involved in definition and standardization of US parameters, reaching a consensus about all lesions and discussing representative examples of the lesions. Further limit was that in Italy therapeutic drug monitoring is not routinely available, and optimization that is based on clinical management is common.

Although it raises a variety of questions that hopefully will be answered in further multicenter studies, this multicenter study presents data to demonstrate the magnitude and significance of BUS as an effective and easy-to-use tool in tight control and monitoring CD lesions during different biological therapies.

Supplementary Material

Note: To access the supplementary material accompanying this article, please click [here](#).

References

1. Maaser C, Sturm A, Vavricka SR, et al. ECCO-ESGAR Guideline for Diagnostic Assessment in IBD Part 1: Initial diagnosis, monitoring of known IBD, detection of complications. *J Crohn's Colitis* 2019;13:144–164.
2. Castiglione F, Testa A, Rea M, et al. Transmural healing evaluated by bowel sonography in patients with Crohn's disease on maintenance treatment with biologics. *Inflamm Bowel Dis* 2013; 19:1.
3. Kucharzik T, Witting BM, Helwig U, et al. Use of Intestinal Ultrasound to Monitor Crohn's Disease Activity. *Clin Gastroenterol Hepatol* 2017;15:535–542.e2.
4. Castiglione F, Imperatore N, Testa A, et al. One-year clinical outcomes with biologics in Crohn's disease: transmural healing compared with mucosal or no healing. *Aliment Pharmacol Ther* 2019;49:1026–1039.
5. Zorzi F, Ghosh S, Chiamonte C, et al. Response Assessed by Ultrasonography as Target of Biological Treatment for Crohn's Disease. *Clin Gastroenterol Hepatol* 2020;18:2030–2037.
6. Calabrese E, Kucharzik T, Maaser C, et al. Real-time Interobserver Agreement in Bowel Ultrasonography for Diagnostic Assessment in Patients with Crohn's Disease: An International Multicenter Study. *Inflamm Bowel Dis* 2018;24:2001–2006.
7. Torres J, Bonovas S, Doherty G, et al. ECCO Guidelines on Therapeutics in Crohn's Disease: Medical Treatment. *J Crohn's Colitis* 2020;14:4–22.
8. Calabrese E, Maaser C, Zorzi F, et al. Bowel ultrasonography in the management of Crohn's disease. A review with

- recommendations of an international panel of experts. *Inflamm Bowel Dis* 2016;22:1168–1183.
9. Maconi G, Nylund K, Ripolles T, et al. EFSUMB Recommendations and Clinical Guidelines for Intestinal Ultrasound (GIUS) in Inflammatory Bowel Diseases. *Ultraschall der Medizin* 2018;39:304–317.
 10. Kratzer W, Foeller T, Kaechele V, et al. [Intestinal wall vascularisation in Crohn's disease]. *Z Gastroenterol* 2004;42:973–978.
 11. Pariente B, Cosnes J, Danese S, et al. Development of the Crohn's disease digestive damage score, the Lémann score. *Inflamm Bowel Dis* 2011;17:1415–1422.
 12. Van Assche G, Herrmann KA, Louis E, et al. Effects of infliximab therapy on transmural lesions as assessed by magnetic resonance enteroclysis in patients with ileal Crohn's disease. *J Crohns Colitis* 2013;7:950–957.
 13. Allocca M, Danese S, Laurent V, Peyrin-Biroulet L. Use of Cross-Sectional Imaging for Tight Monitoring of Inflammatory Bowel Diseases. *Clin Gastroenterol Hepatol* 2020;18:1309–1323.e4.
 14. Zorzi F, Stasi E, Bevivino G, et al. A Sonographic Lesion Index for Crohn's Disease Helps Monitor Changes in Transmural Bowel Damage During Therapy. *Clin Gastroenterol Hepatol* 2014;12:2071–2077.
 15. Castiglione F, Mainenti P, Testa A, et al. Cross-sectional evaluation of transmural healing in patients with Crohn's disease on maintenance treatment with anti-TNF alpha agents. *Dig Liver Dis* 2017;49:484–489.
 16. Fernandes SR, Rodrigues RV, Bernardo S, et al. Transmural Healing Is Associated with Improved Long-term Outcomes of Patients with Crohn's Disease. *Inflamm Bowel Dis* 2017;23:1403–1409.
 17. Kucharzik T, Maaser C. Intestinal ultrasound and management of small bowel Crohn's disease. *Therap Adv Gastroenterol* 2018;11:1756284818771367.
 18. Gasche C, Moser G, Turetschek K, et al. Transabdominal bowel sonography for the detection of intestinal complications in Crohn's disease. *Gut* 1999;44:112–117.

Reprint requests

Address requests for reprints to: Emma Calabrese, MD, PhD, Gastroenterology Unit, Department of Systems Medicine, University of Rome "Tor Vergata", Via

Montpellier, 1, 00133 Rome, Italy. e-mail: emma.calabrese@uniroma2.it; fax: +39-06-20904437.

Acknowledgments

The authors thank the participants and those involved in enrolling and monitoring patients: Federica Benini, Giorgia Di Fluri, Valentina Faletti, Massimo Claudio Fantini, Federica Furfaro, Francesco Mazzuoli, Sara Onali, and Patrizia Saltarelli. The authors dedicate this study to M.V. D'Auria.

CRedit Authorship Contributions

Emma Calabrese, MD, PhD (Conceptualization: Lead; Data curation: Lead; Methodology: Lead; Supervision: Lead; Writing – original draft: Lead; Writing – review & editing: Lead)

Antonio Rispo, Prof (Conceptualization: Equal; Data curation: Equal; Methodology: Equal)

Francesca Zorzi, Dr (Formal analysis: Equal; Methodology: Lead; Writing – original draft: Lead; Writing – review & editing: Lead)

Elena De Cristofaro, Dr (Data curation: Lead)

Anna Testa, Dr (Data curation: Equal)

Giuseppe Costantino, Dr (Data curation: Equal)

Anna Viola, Dr (Data curation: Equal)

Cristina Bezzio, Dr (Data curation: Equal)

Chiara Ricci, Prof (Data curation: Equal)

Simonetta Prencipe, Dr (Data curation: Equal)

Chiara Racchini, Dr (Data curation: Equal)

Gianpiero Stefanelli, Dr (Data curation: Equal)

Mariangela Allocca, Dr (Data curation: Equal)

Salvatore Scotto di Santolo, Dr (Data curation: Equal)

Mauro V. D'Auria, Dr (Data curation: Equal)

Paola Balestrieri, Dr (Data curation: Equal)

Angelo Ricchiuti, Dr (Data curation: Equal)

Maria Cappello, Dr (Data curation: Equal)

Flaminia Cavallaro, Dr (Data curation: Equal)

Alessia Dalila Guarino, Dr (Data curation: Equal)

Giovanni Maconi, Prof (Conceptualization: Equal; Data curation: Equal)

Alessandra Spagnoli, Prof (Formal analysis: Lead)

Giovanni Monteleone, Prof (Methodology: Equal; Supervision: Equal)

Fabiana Castiglione, Prof (Conceptualization: Equal; Data curation: Equal)

Conflicts of interest

These authors disclose the following: EC: Served as a speaker for AbbVie, Takeda, and Janssen. AR: Advisory board for MSD, AbbVie, Takeda, and Janssen. FZ: Served as a speaker for Janssen. AT: Served as a speaker for Janssen and Takeda. CB: Served as a speaker for Takeda, AbbVie, and Janssen. CR: Served as a speaker for AbbVie, Takeda, Janssen, MSD, and Vifor. MA: Received consulting fees from Nikkiso Europe, Mundipharma, Janssen, AbbVie, and Pfizer. GM: Received grant support from Giuliani SpA, Broad Medical Research Foundation, Novo Nordisk, Teva, Sirtris, Lycera, and Sofar, and speaker fees from AbbVie and Zambon and reported a patent related to the use of Smad7 antisense oligonucleotides in Crohn's disease (PCT Pub. No. WO2004/087920). FC: Served as a speaker for Takeda, Janssen, AbbVie, Chiesi; and advisory board for Takeda, Gilead, Janssen, Biogen, and Pfizer. The remaining authors disclose no conflicts.

Supplementary Table 1. Clinical Differences Among Patients in the 4 Groups of Treatment

	ifx n = 31	ada n = 103	vdz n = 24	ust n = 30	P value
Sex, n (%)					
Male	20 (64)	60 (58)	18 (75)	18 (60)	.36
Smoking habits, n (%)					
Yes	11 (35)	39 (38)	11 (46)	10 (33)	.93
CD duration, mo					
Median (range)	63 (3–240)	70 (3–636)	60.5 (3–480)	96 (6–408)	.009
Age at diagnosis, n (%)					
A1	1 (3)	16 (15)	3 (13)	3 (10)	.12
A2	23 (74)	73 (71)	13 (54)	23 (77)	
A3	7 (23)	14 (14)	8 (33)	4 (13)	
CD behavior, n (%)					
B1	13 (42)	52 (50)	7 (29)	8 (27)	.01
B2	16 (52)	34 (33)	13 (54)	13 (43)	
B3	2 (6)	17 (17)	4 (17)	9 (30)	
CD location, n (%)					
L1	16 (52)	51 (49)	12 (50)	10 (33)	.46
L2	2 (6)	4 (4)	1 (4)	3 (10)	
L3	13 (42)	47 (46)	11 (46)	16 (53)	
L1 + L4	0	1 (1)	0	1 (3)	
Perianal disease, n (%)					
Yes	6 (19)	9 (9)	2 (8)	3 (10)	.61
Prior CD-related surgery, n (%)					
Yes	11 (35)	38 (37)	17 (71)	19 (63)	.001
Prior anti-TNFs, n (%)					
Yes	10 (32)	21 (20)	12 (50)	25 (83)	<.0001
Indication to biological therapy at enrollment, n (%)					.65
Steroid dependent	7 (23)	12 (12)	5 (21)	2 (7)	
Active disease	24 (77)	91 (88)	19 (79)	28 (93)	
Harvey-Bradshaw index at enrollment					
Median (range)	7 (0–18)	6 (0–15)	7 (0–17)	8 (0–15)	.001
Concomitant medication at first dose of biological therapy, n (%)					
None	6 (19)	51 (50)	13 (54)	15 (50)	.76
Thiopurines or methotrexate	3 (10)	8 (8)	1 (4)	2 (7)	
Glucocorticoid	6 (19)	18 (17)	5 (21)	7 (23)	
Aminosalicylate drug	12 (39)	23 (22)	4 (17)	6 (20)	
Combo therapy, n (%)	3 (10)	8 (8)	1 (4)	2 (7)	.76
Drug optimization, n (%)	4 (13)	12 (11.6)	3 (12.5)	6 (20)	.45

ada, adalimumab; CD, Crohn's disease; ifx, infliximab; TNF, tumor necrosis factor; ust, ustekinumab; vdz, vedolizumab.